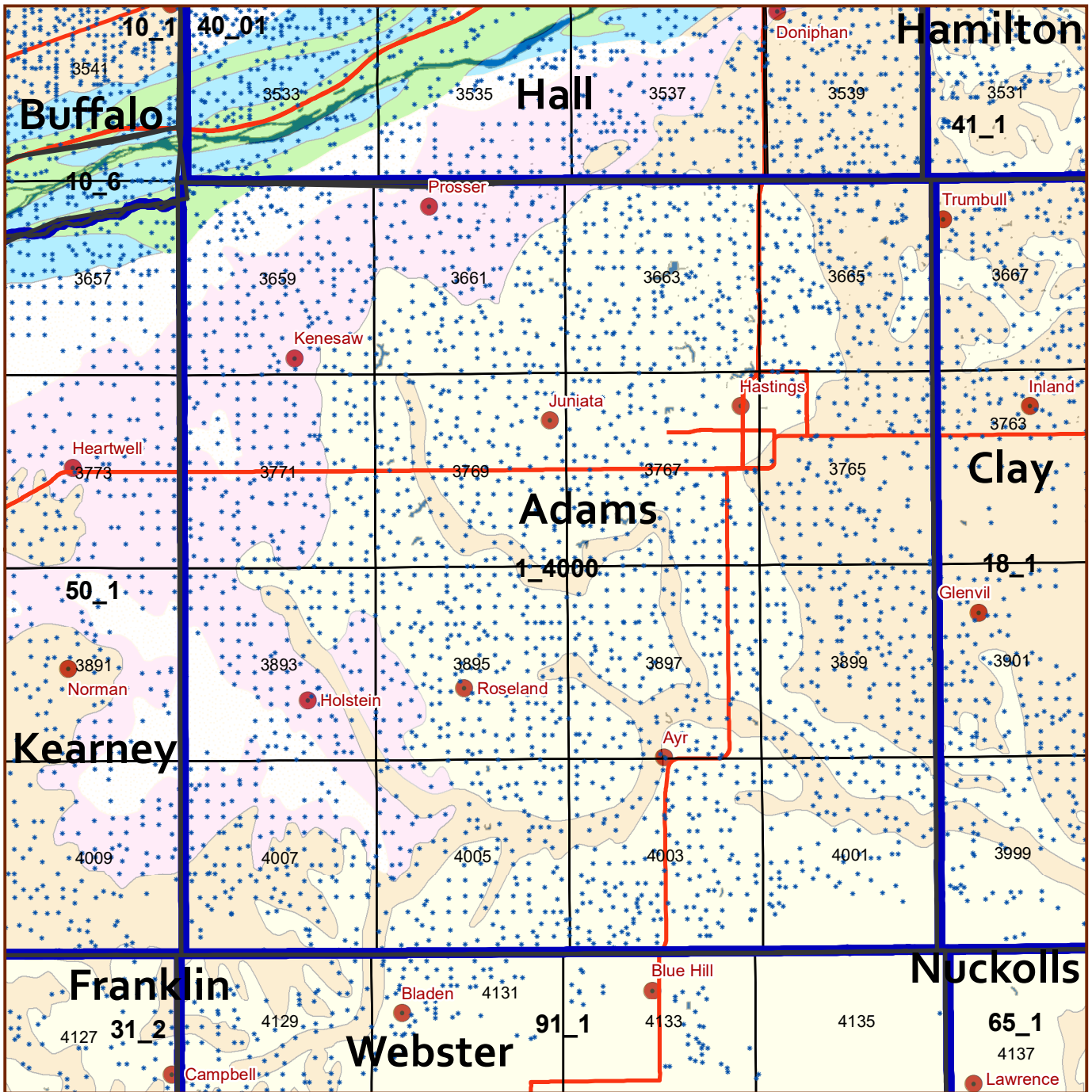


ADAMS COUNTY



Legend

- Market_Area
- County
- Registered_WellsDNR
- geocode
- Federal Roads

**Soils
CLASS**

- Excessive drained sandy soils formed in alluvium in valleys and eolian sand on uplands in sandhills
- Excessively drained sandy soils formed in eolian sands on uplands in sandhills
- Moderately well drained silty soils on uplands and in depressions formed in loess
- Well drained silty soils formed in loess on uplands
- Well drained silty soils formed in loess and alluvium on stream terraces
- Well to somewhat excessively drained loamy soils formed in weathered sandstone and eolian material on uplands
- Somewhat poorly drained soils formed in alluvium on bottom lands
- Moderately well drained silty soils with clay subsoils on uplands
- Lakes