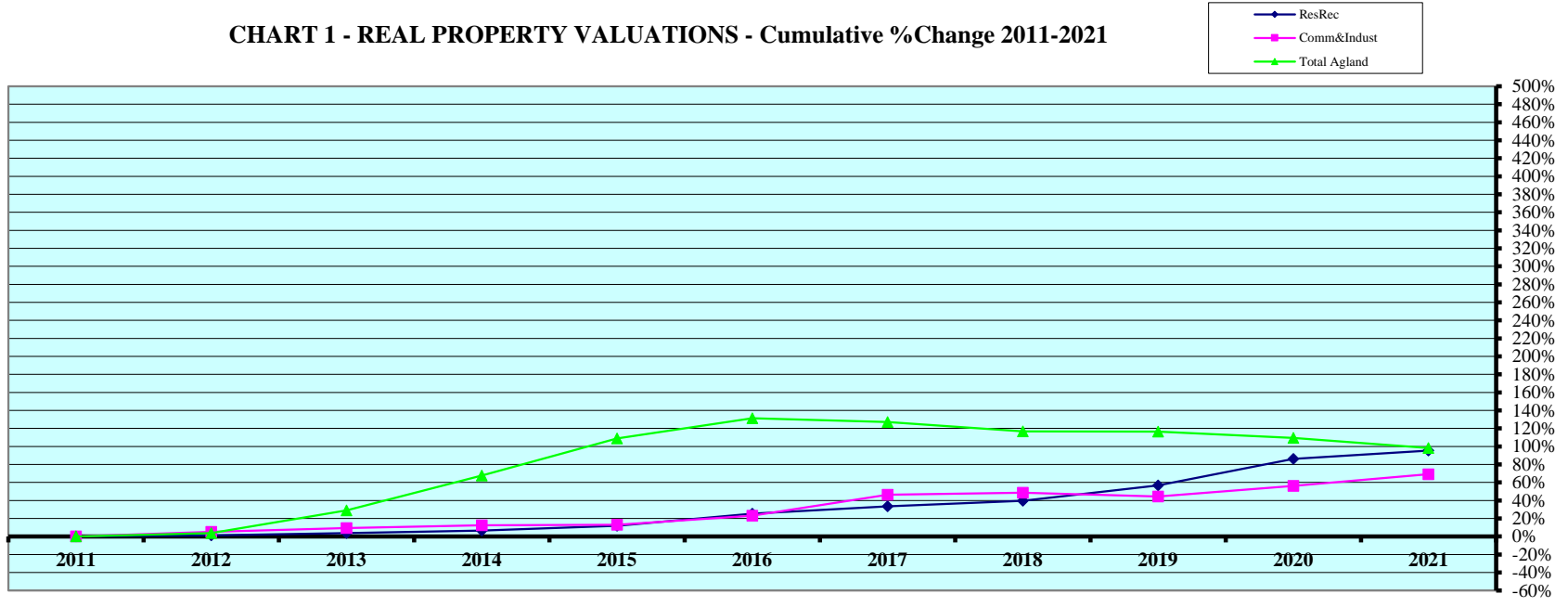


CHART 1 - REAL PROPERTY VALUATIONS - Cumulative %Change 2011-2021



Tax Year	Residential & Recreational ⁽¹⁾				Commercial & Industrial ⁽¹⁾				Total Agricultural Land ⁽¹⁾			
	Value	Amnt Value Chg	Ann.%chg	Cmltv%chg	Value	Amnt Value Chg	Ann.%chg	Cmltv%chg	Value	Amnt Value Chg	Ann.%chg	Cmltv%chg
2011	329,377,695	-	-	-	87,666,360	-	-	-	338,244,890	-	-	-
2012	333,648,235	4,270,540	1.30%	1.30%	92,246,280	4,579,920	5.22%	5.22%	350,530,405	12,285,515	3.63%	3.63%
2013	341,462,055	7,813,820	2.34%	3.67%	95,871,540	3,625,260	3.93%	9.36%	436,629,290	86,098,885	24.56%	29.09%
2014	350,691,700	9,229,645	2.70%	6.47%	98,592,825	2,721,285	2.84%	12.46%	567,610,755	130,981,465	30.00%	67.81%
2015	368,082,665	17,390,965	4.96%	11.75%	99,107,250	514,425	0.52%	13.05%	706,691,440	139,080,685	24.50%	108.93%
2016	413,237,412	45,154,747	12.27%	25.46%	107,873,128	8,765,878	8.84%	23.05%	782,428,060	75,736,620	10.72%	131.32%
2017	439,259,790	26,022,378	6.30%	33.36%	128,365,990	20,492,862	19.00%	46.43%	768,176,910	-14,251,150	-1.82%	127.11%
2018	460,152,436	20,892,646	4.76%	39.70%	130,345,150	1,979,160	1.54%	48.68%	733,539,115	-34,637,795	-4.51%	116.87%
2019	516,332,990	56,180,554	12.21%	56.76%	126,712,020	-3,633,130	-2.79%	44.54%	732,353,790	-1,185,325	-0.16%	116.52%
2020	613,156,999	96,824,009	18.75%	86.16%	137,010,450	10,298,430	8.13%	56.29%	708,639,255	-23,714,535	-3.24%	109.50%
2021	643,513,495	30,356,496	4.95%	95.37%	148,321,785	11,311,335	8.26%	69.19%	670,355,005	-38,284,250	-5.40%	98.19%

Rate Annual %chg: Residential & Recreational **6.93%**

Commercial & Industrial **5.40%**

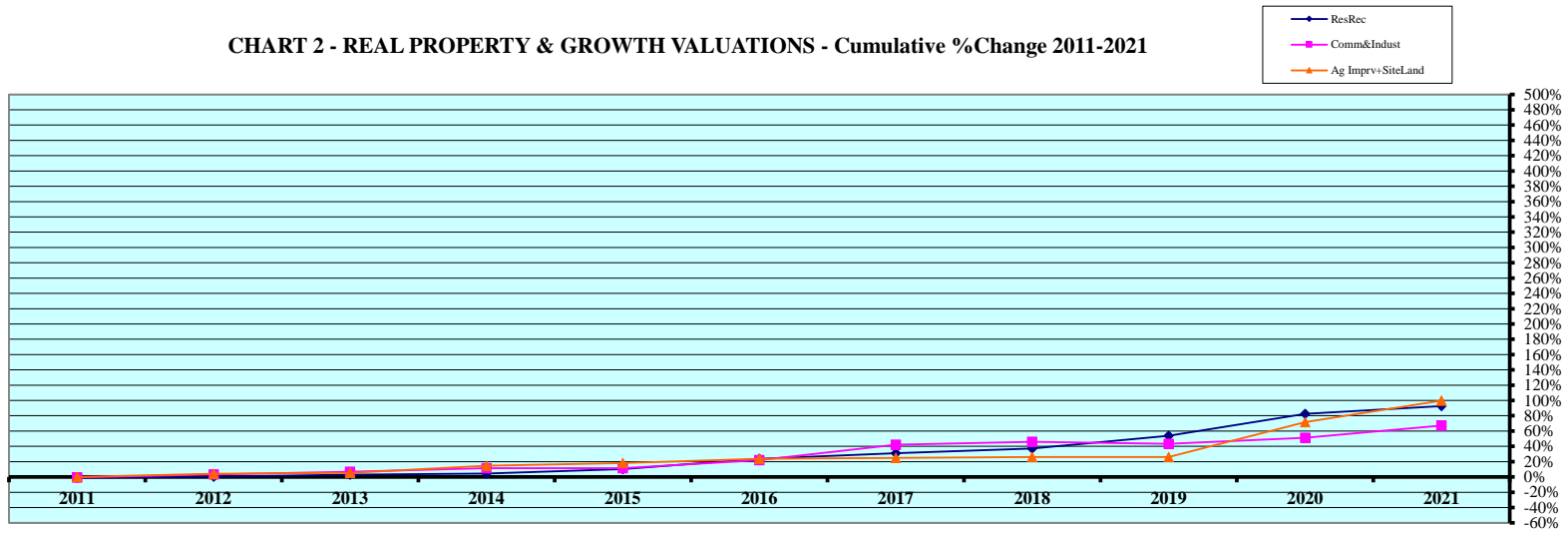
Agricultural Land **7.08%**

Cnty# **51**
County **KEITH**

CHART 1

(1) Residential & Recreational excludes Agric. dwelling & farm home site land. Commercial & Industrial excludes minerals. Agricultural land includes irrigated, dry, grass, waste, & other agland, excludes farm site land.

CHART 2 - REAL PROPERTY & GROWTH VALUATIONS - Cumulative %Change 2011-2021



Tax Year	Residential & Recreational ⁽¹⁾						Commercial & Industrial ⁽¹⁾						
	Value	Growth Value	% growth of value	Value Exclud. Growth	Ann.%chg w/o grwth	Cmltv%chg w/o grwth	Value	Growth Value	% growth of value	Value Exclud. Growth	Ann.%chg w/o grwth	Cmltv%chg w/o grwth	
2011	329,377,695	3,375,563	1.02%	326,002,132	-	-1.02%	87,666,360	599,350	0.68%	87,067,010	-	-0.68%	
2012	333,648,235	3,574,004	1.07%	330,074,231	0.21%	0.21%	92,246,280	1,702,665	1.85%	90,543,615	3.28%	3.28%	
2013	341,462,055	2,062,060	0.60%	339,399,995	1.72%	3.04%	95,871,540	2,182,705	2.28%	93,688,835	1.56%	6.87%	
2014	350,691,700	6,315,095	1.80%	344,376,605	0.85%	4.55%	98,592,825	990,265	1.00%	97,602,560	1.81%	11.33%	
2015	368,082,665	4,533,360	1.23%	363,549,305	3.67%	10.37%	99,107,250	1,328,895	1.34%	97,778,355	-0.83%	11.53%	
2016	413,237,412	5,675,133	1.37%	407,562,279	10.73%	23.74%	107,873,128	857,120	0.79%	107,016,008	7.98%	22.07%	
2017	439,259,790	7,276,707	1.66%	431,983,083	4.54%	31.15%	128,365,990	3,723,685	2.90%	124,642,305	15.55%	42.18%	
2018	460,152,436	8,682,225	1.89%	451,470,211	2.78%	37.07%	130,345,150	2,449,165	1.88%	127,895,985	-0.37%	45.89%	
2019	516,332,990	9,474,572	1.83%	506,858,418	10.15%	53.88%	126,712,020	983,120	0.78%	125,728,900	-3.54%	43.42%	
2020	613,156,999	11,992,588	1.96%	601,164,411	16.43%	82.52%	137,010,450	4,379,690	3.20%	132,630,760	4.67%	51.29%	
2021	643,513,495	8,990,795	1.40%	634,522,700	3.48%	92.64%	148,321,785	1,750,060	1.18%	146,571,725	6.98%	67.19%	
Rate Ann%chg	6.93%			Resid & Recreat w/o growth			5.46%			C & I w/o growth			3.71%

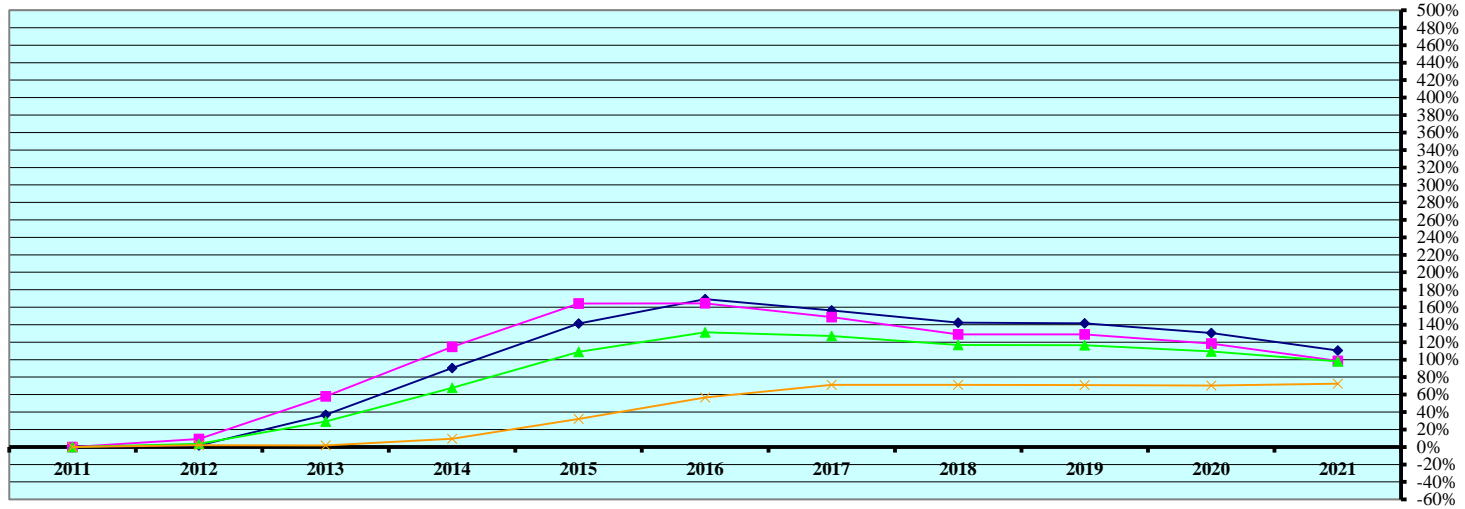
Tax Year	Ag Improvements & Site Land ⁽¹⁾								
	Agric. Dwelling & Homesite Value	Ag Outbldg & Farmsite Value	Ag Imprv+Site Total Value	Growth Value	% growth of value	Value Exclud. Growth	Ann.%chg w/o grwth	Cmltv%chg w/o grwth	
2011	33,011,130	17,112,960	50,124,090	1,445,390	2.88%	48,678,700	-	-	
2012	35,743,265	18,042,740	53,786,005	1,624,760	3.02%	52,161,245	4.06%	4.06%	
2013	36,824,515	17,617,475	54,441,990	1,661,988	3.05%	52,780,002	-1.87%	5.30%	
2014	37,309,115	22,844,325	60,153,440	2,707,340	4.50%	57,446,100	5.52%	14.61%	
2015	38,889,360	23,410,395	62,299,755	3,127,015	5.02%	59,172,740	-1.63%	18.05%	
2016	40,009,685	23,426,275	63,435,960	1,376,065	2.17%	62,059,895	-0.39%	23.81%	
2017	40,139,220	23,460,265	63,599,485	1,005,280	1.58%	62,594,205	-1.33%	24.88%	
2018	40,223,197	23,932,945	64,156,142	951,390	1.48%	63,204,752	-0.62%	26.10%	
2019	39,903,544	24,040,580	63,944,124	779,615	1.22%	63,164,509	-1.55%	26.02%	
2020	49,916,840	36,920,685	86,837,525	768,915	0.89%	86,068,610	34.60%	71.71%	
2021	57,016,145	43,851,268	100,867,413	748,705	0.74%	100,118,708	15.29%	99.74%	
Rate Ann%chg	5.62%		9.87%		7.24%		Ag Imprv+Site w/o growth		5.21%

(1) Residential & Recreational excludes AgDwelling & farm home site land; Comm. & Indust. excludes minerals; Agric. land includes irrigated, dry, grass, waste & other agland, excludes farm site land. Real property growth is value attributable to new construction, additions to existing buildings, and any improvements to real property which increase the value of such property. Sources: Value; 2011 - 2021 CTL Growth Value; 2011-2021 Abstract of Asmnt Rpt.

Cnty# 51
County KEITH

CHART 2

CHART 3 - AGRICULTURAL LAND VALUATIONS - Cumulative % Change 2011-2021



Tax Year	Irrigated Land				Dryland				Grassland			
	Value	Value Chg	Ann%chg	Cmltv%chg	Value	Value Chg	Ann%chg	Cmltv%chg	Value	Value Chg	Ann%chg	Cmltv%chg
2011	170,224,510	-	-	-	54,046,205	-	-	-	110,464,590	-	-	-
2012	173,179,285	2,954,775	1.74%	1.74%	58,967,060	4,920,855	9.10%	9.10%	112,674,250	2,209,660	2.00%	2.00%
2013	232,814,915	59,635,630	34.44%	36.77%	85,414,165	26,447,105	44.85%	58.04%	112,333,770	-340,480	-0.30%	1.69%
2014	323,944,205	91,129,290	39.14%	90.30%	115,961,525	30,547,360	35.76%	114.56%	120,742,990	8,409,220	7.49%	9.30%
2015	410,673,885	86,729,680	26.77%	141.25%	142,814,790	26,853,265	23.16%	164.25%	145,830,570	25,087,580	20.78%	32.02%
2016	458,346,890	47,673,005	11.61%	169.26%	142,895,685	80,895	0.06%	164.40%	173,149,735	27,319,165	18.73%	56.75%
2017	436,577,015	-21,769,875	-4.75%	156.47%	134,464,255	-8,431,430	-5.90%	148.79%	189,079,125	15,929,390	9.20%	71.17%
2018	412,524,360	-24,052,655	-5.51%	142.34%	123,752,370	-10,711,885	-7.97%	128.98%	188,944,080	-135,045	-0.07%	71.04%
2019	411,377,910	-1,146,450	-0.28%	141.67%	123,654,105	-98,265	-0.08%	128.79%	188,776,715	-167,365	-0.09%	70.89%
2020	392,560,560	-18,817,350	-4.57%	130.61%	118,048,075	-5,606,030	-4.53%	118.42%	188,177,945	-598,770	-0.32%	70.35%
2021	358,428,030	-34,132,530	-8.69%	110.56%	107,343,450	-10,704,625	-9.07%	98.61%	190,534,460	2,356,515	1.25%	72.48%

Rate Ann.%chg: Irrigated **7.73%** Dryland **7.10%** Grassland **5.60%**

Tax Year	Waste Land ⁽¹⁾				Other Agland ⁽¹⁾				Total Agricultural			
	Value	Value Chg	Ann%chg	Cmltv%chg	Value	Value Chg	Ann%chg	Cmltv%chg	Value	Value Chg	Ann%chg	Cmltv%chg
2011	3,509,585	-	-	-	0	-	-	-	338,244,890	-	-	-
2012	14,165	-3,495,420	-99.60%	-99.60%	5,695,645	5,695,645	-	-	350,530,405	12,285,515	3.63%	3.63%
2013	14,520	355	2.51%	-99.59%	6,051,920	356,275	6.26%	-	436,629,290	86,098,885	24.56%	29.09%
2014	6,139,905	6,125,385	42185.85%	74.95%	822,130	-5,229,790	-86.42%	-	567,610,755	130,981,465	30.00%	67.81%
2015	1,833,420	-4,306,485	-70.14%	-47.76%	5,538,775	4,716,645	573.71%	-	706,691,440	139,080,685	24.50%	108.93%
2016	2,011,925	178,505	9.74%	-42.67%	6,023,825	485,050	8.76%	-	782,428,060	75,736,620	10.72%	131.32%
2017	155,800	-1,856,125	-92.26%	-95.56%	7,900,715	1,876,890	31.16%	-	768,176,910	-14,251,150	-1.82%	127.11%
2018	155,800	0	0.00%	-95.56%	8,162,505	261,790	3.31%	-	733,539,115	-34,637,795	-4.51%	116.87%
2019	155,800	0	0.00%	-95.56%	8,389,260	226,755	2.78%	-	732,353,790	-1,185,325	-0.16%	116.52%
2020	401,515	245,715	157.71%	-88.56%	9,451,160	1,061,900	12.66%	-	708,639,255	-23,714,535	-3.24%	109.50%
2021	313,810	-87,705	-21.84%	-91.06%	13,735,255	4,284,095	45.33%	-	670,355,005	-38,284,250	-5.40%	98.19%

Cnty# **51**
County **KEITH**

Rate Ann.%chg: Total Agric Land **7.08%**

CHART 4 - AGRICULTURAL LAND - AVERAGE VALUE PER ACRE - Cumulative % Change 2011-2021 (from County Abstract Reports)⁽¹⁾

Tax Year	IRRIGATED LAND					DRYLAND					GRASSLAND				
	Value	Acres	Avg Value per Acre	Ann%chg AvgVal/acre	Cmltv%chg AvgVal/Acre	Value	Acres	Avg Value per Acre	Ann%chg AvgVal/acre	Cmltv%chg AvgVal/Acre	Value	Acres	Avg Value per Acre	Ann%chg AvgVal/acre	Cmltv%chg AvgVal/Acre
2011	155,181,690	112,643	1,378			47,830,570	109,585	436			81,700,995	133,333	613		
2012	170,289,025	110,472	1,541	11.89%	11.89%	54,243,085	107,908	503	15.17%	15.17%	89,688,965	135,300	663	8.18%	9.46%
2013	172,801,045	110,522	1,563	1.43%	13.49%	58,794,685	107,209	548	9.10%	25.65%	89,574,800	130,628	686	3.44%	13.24%
2014	232,972,615	113,587	2,051	31.18%	48.88%	85,270,595	105,495	808	47.39%	85.19%	97,239,960	127,646	762	11.09%	25.80%
2015	323,756,345	113,685	2,848	38.85%	106.72%	116,131,510	105,668	1,099	35.97%	151.80%	128,539,130	127,483	1,008	32.36%	66.50%
2016	410,707,420	113,399	3,622	27.18%	162.90%	142,844,735	105,489	1,354	23.21%	210.24%	149,636,865	127,257	1,176	16.62%	94.17%
2017	458,346,380	113,475	4,039	11.52%	193.20%	142,915,300	105,462	1,355	0.07%	210.47%	164,929,515	127,713	1,291	9.83%	113.25%
2018	436,577,015	113,106	3,860	-4.44%	180.18%	134,578,625	105,740	1,273	-6.08%	191.60%	174,353,050	127,360	1,369	6.01%	126.06%
2019	412,542,325	112,876	3,655	-5.31%	165.30%	123,707,720	105,619	1,171	-7.97%	168.35%	167,960,980	130,138	1,291	-5.72%	113.13%
2020	411,415,160	112,592	3,654	-0.02%	165.24%	123,614,365	105,547	1,171	-0.01%	168.33%	167,183,410	129,675	1,289	-0.11%	112.90%
2021	392,650,730	112,583	3,488	-4.55%	153.16%	118,187,135	105,635	1,119	-4.47%	156.33%	188,257,985	402,973	467	-63.76%	-23.76%

Rate Annual %chg Average Value/Acre: 9.73%

9.87%

-2.68%

Tax Year	WASTE LAND ⁽²⁾					OTHER AGLAND ⁽²⁾					TOTAL AGRICULTURAL LAND ⁽¹⁾				
	Value	Acres	Avg Value per Acre	Ann%chg AvgVal/acre	Cmltv%chg AvgVal/Acre	Value	Acres	Avg Value per Acre	Ann%chg AvgVal/acre	Cmltv%chg AvgVal/Acre	Value	Acres	Avg Value per Acre	Ann%chg AvgVal/acre	Cmltv%chg AvgVal/Acre
2011	2,501,010	14,487	173			100,085	125	798			316,963,750	636,358	498		
2012	2,475,940	14,344	173	-0.01%	-0.01%	0	0				338,132,640	637,872	530	6.43%	6.43%
2013	6,757,150	14,299	473	173.77%	173.73%	0	0				350,833,760	636,601	551	3.96%	10.64%
2014	14,520	579	25	-94.69%	-85.48%	6,096,625	14,377	424		-46.84%	350,833,760	638,136	684	24.17%	37.38%
2015	7,094,715	13,789	515	1952.35%	198.03%	1,081,045	884	1,223	188.36%	53.29%	568,940,045	638,031	892	30.31%	79.03%
2016	1,833,420	3,574	513	-0.30%	197.12%	5,740,435	10,556	544	-55.53%	-31.83%	706,925,590	637,360	1,109	24.38%	122.68%
2017	2,011,925	3,574	563	9.74%	226.05%	6,023,825	10,599	568	4.51%	-28.75%	782,380,520	637,291	1,228	10.69%	146.47%
2018	2,020,065	3,573	565	0.45%	227.51%	6,036,450	10,596	570	0.24%	-28.58%	768,234,440	637,294	1,205	-1.81%	142.02%
2019	155,800	562	277	-50.95%	60.65%	8,153,875	13,712	595	4.38%	-25.45%	733,558,015	637,001	1,152	-4.47%	131.20%
2020	155,800	562	277	0.00%	60.65%	8,349,095	14,126	591	-0.61%	-25.91%	732,350,265	636,711	1,150	-0.12%	130.92%
2021	400,150	1,219	328	18.38%	90.19%	9,944,110	14,316	695	17.52%	-12.92%	709,440,110	636,726	1,114	-3.13%	123.69%

51
KEITH

Rate Annual %chg Average Value/Acre: 8.38%

(1) Valuations from County Abstracts vs Certificate of Taxes Levied Reports (CTL) will vary due to different reporting dates. Source: 2011 - 2021 County Abstract Reports
Agland Assessment Level 1998 to 2006 = 80%; 2007 & forward = 75% NE Dept. of Revenue, Property Assessment Division Prepared as of 03/01/2022

CHART 4

CHART 5 - 2021 County and Municipal Valuations by Property Type

Pop.	County:	Personal Prop	StateAsd PP	StateAsdReal	Residential	Commercial	Industrial	Recreation	Agland	Agdwell&HS	AgImprv&FS	Minerals	Total Value
8,335	KEITH	64,200,726	47,680,271	234,300,882	619,309,450	139,998,625	8,323,160	24,204,045	670,355,005	59,481,480	51,584,410	136,935	1,919,574,989
cnty sectorvalue % of total value:		3.34%	2.48%	12.21%	32.26%	7.29%	0.43%	1.26%	34.92%	3.10%	2.69%	0.01%	100.00%
Pop.	Municipality:	Personal Prop	StateAsd PP	StateAsd Real	Residential	Commercial	Industrial	Recreation	Agland	Agdwell&HS	AgImprv&FS	Minerals	Total Value
326	BRULE	231,476	818,883	1,618,755	11,739,985	3,608,880	60,660	0	0	0	0	0	18,078,639
3.91%	%sector of county sector	0.36%	1.72%	0.69%	1.90%	2.58%	0.73%						0.94%
	%sector of municipality	1.28%	4.53%	8.95%	64.94%	19.96%	0.34%						100.00%
4,737	OGALLALA	11,340,966	6,622,306	8,533,995	204,920,125	95,525,930	7,334,380	0	0	0	0	0	334,277,702
56.83%	%sector of county sector	17.66%	13.89%	3.64%	33.09%	68.23%	88.12%						17.41%
	%sector of municipality	3.39%	1.98%	2.55%	61.30%	28.58%	2.19%						100.00%
523	PAXTON	1,350,768	947,695	3,131,723	18,716,390	7,107,455	669,795	0	167,520	0	0	0	32,091,346
6.27%	%sector of county sector	2.10%	1.99%	1.34%	3.02%	5.08%	8.05%		0.02%				1.67%
	%sector of municipality	4.21%	2.95%	9.76%	58.32%	22.15%	2.09%		0.52%				100.00%
0	%sector of county sector	0	0	0	0	0	0	0	0	0	0	0	0
0	%sector of municipality	0	0	0	0	0	0	0	0	0	0	0	0
0	%sector of county sector	0	0	0	0	0	0	0	0	0	0	0	0
0	%sector of municipality	0	0	0	0	0	0	0	0	0	0	0	0
0	%sector of county sector	0	0	0	0	0	0	0	0	0	0	0	0
0	%sector of municipality	0	0	0	0	0	0	0	0	0	0	0	0
0	%sector of county sector	0	0	0	0	0	0	0	0	0	0	0	0
0	%sector of municipality	0	0	0	0	0	0	0	0	0	0	0	0
0	%sector of county sector	0	0	0	0	0	0	0	0	0	0	0	0
0	%sector of municipality	0	0	0	0	0	0	0	0	0	0	0	0
0	%sector of county sector	0	0	0	0	0	0	0	0	0	0	0	0
0	%sector of municipality	0	0	0	0	0	0	0	0	0	0	0	0
0	%sector of county sector	0	0	0	0	0	0	0	0	0	0	0	0
0	%sector of municipality	0	0	0	0	0	0	0	0	0	0	0	0
0	%sector of county sector	0	0	0	0	0	0	0	0	0	0	0	0
0	%sector of municipality	0	0	0	0	0	0	0	0	0	0	0	0
5,586	Total Municipalities	12,923,210	8,388,884	13,284,473	235,376,500	106,242,265	8,064,835	0	167,520	0	0	0	384,447,687
67.02%	%all municip.sectors of cnty	20.13%	17.59%	5.67%	38.01%	75.89%	96.90%		0.02%				20.03%