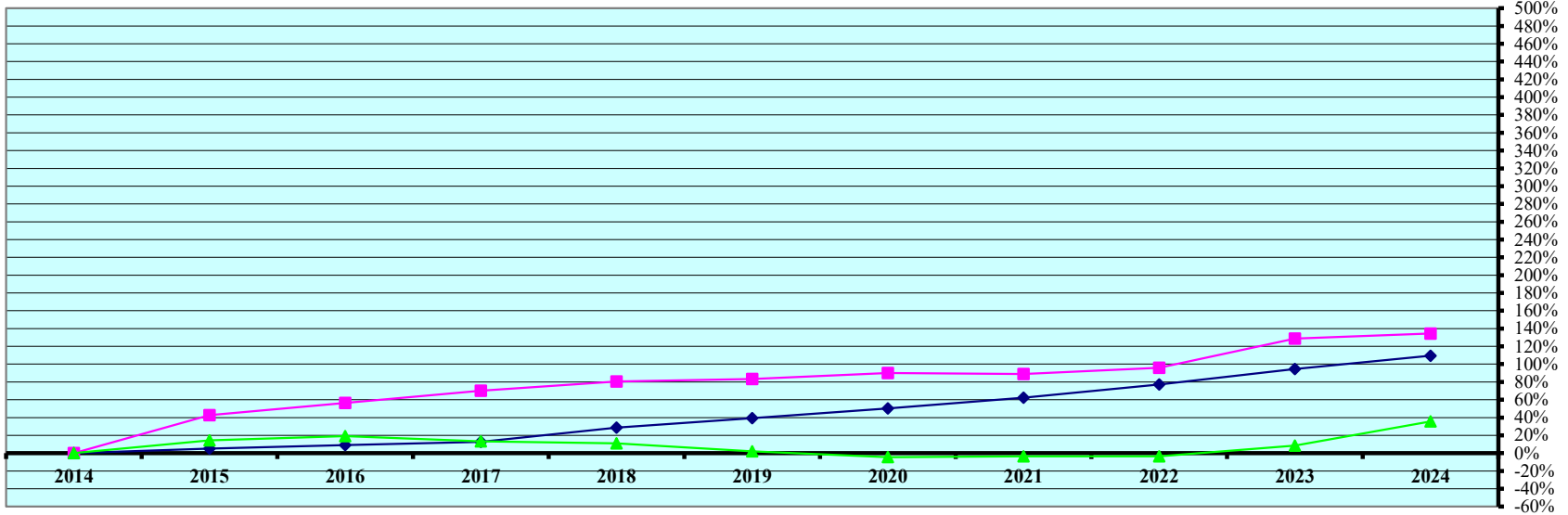


**CHART 1 - REAL PROPERTY VALUATIONS - Cumulative % Change 2014 - 2024**



Tax Year	Residential & Recreational (1)				Commercial & Industrial (1)				Total Agricultural Land (1)			
	Value	Amnt Value Chg	Ann.%chg	Cmltv%chg	Value	Amnt Value Chg	Ann.%chg	Cmltv%chg	Value	Amnt Value Chg	Ann.%chg	Cmltv%chg
2014	223,371,065	-	-	-	55,107,225	-	-	-	1,279,210,530	-	-	-
2015	234,496,330	11,125,265	4.98%	4.98%	78,572,250	23,465,025	42.58%	42.58%	1,463,861,320	184,650,790	14.43%	14.43%
2016	243,816,830	9,320,500	3.97%	9.15%	86,174,125	7,601,875	9.68%	56.38%	1,524,934,300	61,072,980	4.17%	19.21%
2017	251,733,370	7,916,540	3.25%	12.70%	93,742,290	7,568,165	8.78%	70.11%	1,447,390,900	-77,543,400	-5.09%	13.15%
2018	287,406,795	35,673,425	14.17%	28.67%	99,495,995	5,753,705	6.14%	80.55%	1,419,966,065	-27,424,835	-1.89%	11.00%
2019	310,985,015	23,578,220	8.20%	39.22%	100,987,820	1,491,825	1.50%	83.26%	1,304,324,575	-115,641,490	-8.14%	1.96%
2020	335,556,705	24,571,690	7.90%	50.22%	104,674,900	3,687,080	3.65%	89.95%	1,221,131,381	-83,193,194	-6.38%	-4.54%
2021	362,412,280	26,855,575	8.00%	62.25%	104,160,925	-513,975	-0.49%	89.02%	1,234,513,375	13,381,994	1.10%	-3.49%
2022	395,900,130	33,487,850	9.24%	77.24%	107,979,780	3,818,855	3.67%	95.94%	1,234,588,275	74,900	0.01%	-3.49%
2023	434,312,635	38,412,505	9.70%	94.44%	126,056,600	18,076,820	16.74%	128.75%	1,386,202,520	151,614,245	12.28%	8.36%
2024	467,975,700	33,663,065	7.75%	109.51%	129,200,665	3,144,065	2.49%	134.45%	1,734,740,835	348,538,315	25.14%	35.61%

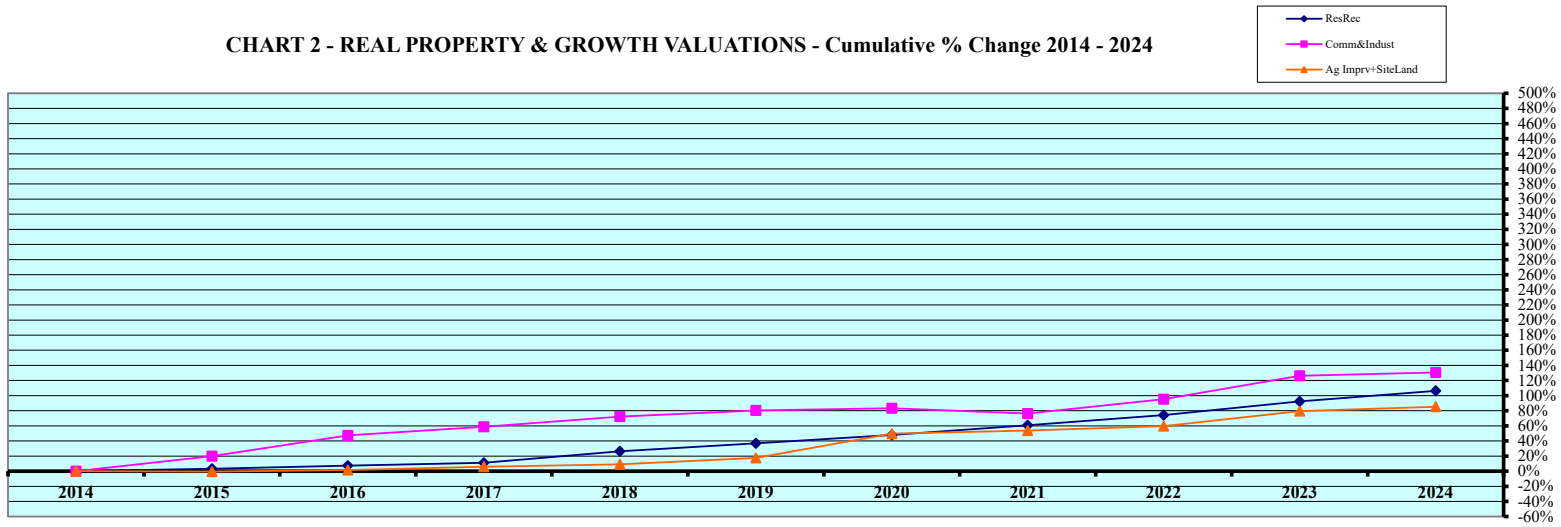
Rate Annual %chg: Residential & Recreational **7.68%** Commercial & Industrial **8.89%** Agricultural Land **3.09%**

Cnty# **70**  
County **PIERCE**

**CHART 1**

(1) Residential & Recreational excludes Agric. dwelling & farm home site land. Commercial & Industrial excludes minerals. Agricultural land includes irrigated, dry, grass, waste, & other agland, excludes farm site land.  
Source: 2014 - 2024 Certificate of Taxes Levied Reports CTL NE Dept. of Revenue, Property Assessment Division Prepared as of 02/11/2025

CHART 2 - REAL PROPERTY & GROWTH VALUATIONS - Cumulative % Change 2014 - 2024



Tax Year	Residential & Recreational (1)						Commercial & Industrial (1)					
	Value	Growth Value	% growth of value	Value Exclud. Growth	Ann.%chg w/o grwth	Cmltv%chg w/o grwth	Value	Growth Value	% growth of value	Value Exclud. Growth	Ann.%chg w/o grwth	Cmltv%chg w/o grwth
2014	223,371,065	3,050,945	1.37%	220,320,120	--	--	55,107,225	3,436,685	6.24%	51,670,540	--	--
2015	234,496,330	3,579,283	1.53%	230,917,047	3.38%	3.38%	78,572,250	12,469,340	15.87%	66,102,910	19.95%	19.95%
2016	243,816,830	3,861,220	1.58%	239,955,610	2.33%	7.42%	86,174,125	4,998,232	5.80%	81,175,893	3.31%	47.31%
2017	251,733,370	3,454,561	1.37%	248,278,809	1.83%	11.15%	93,742,290	6,247,665	6.66%	87,494,625	1.53%	58.77%
2018	287,406,795	5,046,472	1.76%	282,360,323	12.17%	26.41%	99,495,995	4,612,335	4.64%	94,883,660	1.22%	72.18%
2019	310,985,015	5,108,600	1.64%	305,876,415	6.43%	36.94%	100,987,820	1,629,720	1.61%	99,358,100	-0.14%	80.30%
2020	335,556,705	5,087,134	1.52%	330,469,571	6.27%	47.95%	104,674,900	3,657,905	3.49%	101,016,995	0.03%	83.31%
2021	362,412,280	3,304,245	0.91%	359,108,035	7.02%	60.77%	104,160,925	7,067,905	6.79%	97,093,020	-7.24%	76.19%
2022	395,900,130	6,768,600	1.71%	389,131,530	7.37%	74.21%	107,979,780	423,580	0.39%	107,556,200	3.26%	95.18%
2023	434,312,635	4,699,285	1.08%	429,613,350	8.52%	92.33%	126,056,600	1,388,725	1.10%	124,667,875	15.45%	126.23%
2024	467,975,700	7,213,301	1.54%	460,762,399	6.09%	106.28%	129,200,665	2,099,210	1.62%	127,101,455	0.83%	130.64%
Rate Ann%chg	7.68%	Resid & Recreat w/o growth				6.14%	C & I w/o growth				3.82%	

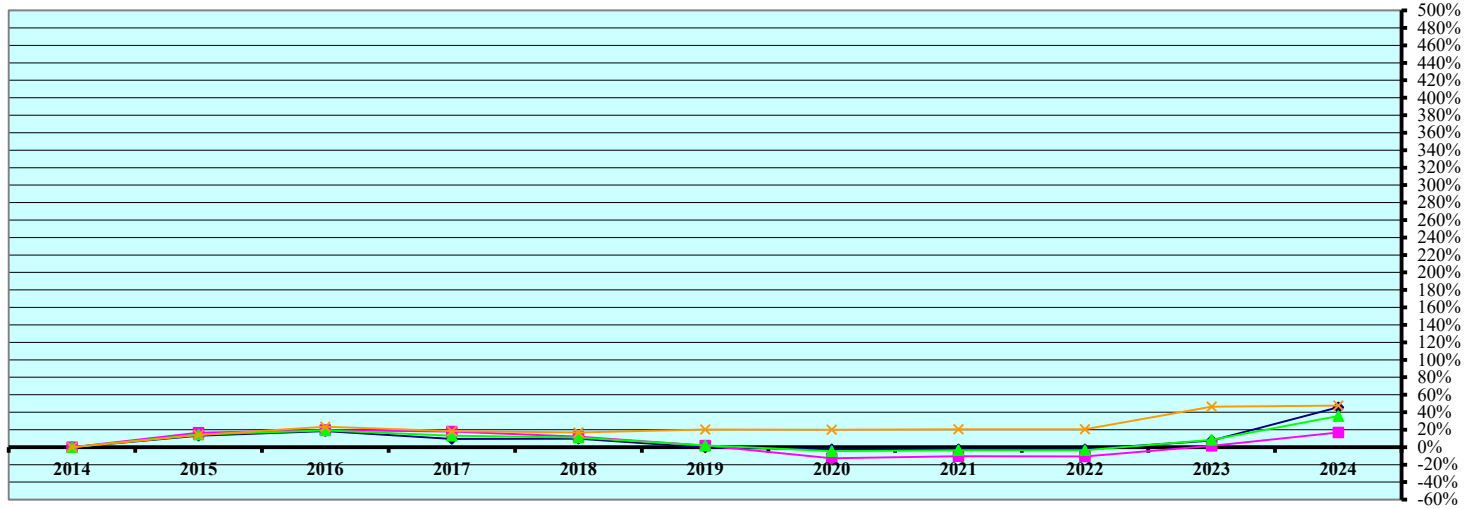
Tax Year	Ag Improvements & Site Land (1)						Ann.%chg w/o grwth	Cmltv%chg w/o grwth
	Agric. Dwelling & Homesite Value	Ag Outbldg & Farmsite Value	Ag Imprv&Site Total Value	Growth Value	% growth of value	Value Exclud. Growth		
2014	53,739,970	41,272,450	95,012,420	4,204,526	4.43%	90,807,894	--	--
2015	53,821,120	42,689,990	96,511,110	1,983,585	2.06%	94,527,525	-0.51%	-0.51%
2016	54,425,940	45,492,700	99,918,640	3,492,960	3.50%	96,425,680	-0.09%	1.49%
2017	60,753,240	42,665,880	103,419,120	2,826,890	2.73%	100,592,230	0.67%	5.87%
2018	62,043,960	46,007,050	108,051,010	4,320,235	4.00%	103,730,775	0.30%	9.18%
2019	66,327,885	47,221,070	113,548,955	1,898,275	1.67%	111,650,680	3.33%	17.51%
2020	90,547,495	54,005,490	144,552,985	2,215,060	1.53%	142,337,925	25.35%	49.81%
2021	90,332,145	56,715,070	147,047,215	872,940	0.59%	146,174,275	1.12%	53.85%
2022	95,966,880	60,356,055	156,322,935	4,703,295	3.01%	151,619,640	3.11%	59.58%
2023	106,680,410	68,564,685	175,245,095	4,569,040	2.61%	170,676,055	9.18%	79.64%
2024	110,235,710	70,838,520	181,074,230	5,078,825	2.80%	175,995,405	0.43%	85.23%
Rate Ann%chg	7.45%	5.55%	6.66%	Ag Imprv+Site w/o growth		4.29%		

(1) Residential & Recreational excludes AgDwelling & farm home site land; Comm. & Indust. excludes minerals; Agric. land includes irrigated, dry, grass, waste & other agland, excludes farm site land. Real property growth is value attributable to new construction, additions to existing buildings, and any improvements to real property which increase the value of such property. Sources: Value; 2014 - 2024 CTL Growth Value; 2014 - 2024 Abstract of Asmnt Rpt. Prepared as of 02/11/2025

Cnty# 70  
County PIERCE

CHART 2

CHART 3 - AGRICULTURAL LAND VALUATIONS - Cumulative % Change 2014 - 2024



Tax Year	Irrigated Land				Dryland				Grassland			
	Value	Value Chg	Ann%chg	Cmltv%chg	Value	Value Chg	Ann%chg	Cmltv%chg	Value	Value Chg	Ann%chg	Cmltv%chg
2014	727,401,115	-	-	-	460,208,255	-	-	-	91,342,075	-	-	-
2015	823,739,870	96,338,755	13.24%	13.24%	535,808,785	75,600,530	16.43%	16.43%	104,017,235	12,675,160	13.88%	13.88%
2016	861,471,910	37,732,040	4.58%	18.43%	550,361,060	14,552,275	2.72%	19.59%	112,773,865	8,756,630	8.42%	23.46%
2017	796,951,905	-64,520,005	-7.49%	9.56%	541,862,950	-8,498,110	-1.54%	17.74%	108,248,665	-4,525,200	-4.01%	18.51%
2018	797,192,140	240,235	0.03%	9.59%	515,843,560	-26,019,390	-4.80%	12.09%	106,605,005	-1,643,660	-1.52%	16.71%
2019	725,940,520	-71,251,620	-8.94%	-0.20%	468,252,635	-47,590,925	-9.23%	1.75%	109,806,180	3,201,175	3.00%	20.21%
2020	709,362,260	-16,578,260	-2.28%	-2.48%	401,745,975	-66,506,660	-14.20%	-12.70%	109,697,478	-108,702	-0.10%	20.10%
2021	710,242,805	880,545	0.12%	-2.36%	412,931,210	11,185,235	2.78%	-10.27%	110,155,080	457,602	0.42%	20.60%
2022	710,473,325	230,520	0.03%	-2.33%	411,867,150	-1,064,060	-0.26%	-10.50%	110,002,060	-153,020	-0.14%	20.43%
2023	782,617,815	72,144,490	10.15%	7.59%	467,408,280	55,541,130	13.49%	1.56%	133,756,820	23,754,760	21.59%	46.44%
2024	1,059,668,475	277,050,660	35.40%	45.68%	537,825,830	70,417,550	15.07%	16.87%	134,843,115	1,086,295	0.81%	47.62%

Rate Ann.%chg: Irrigated **3.83%** Dryland **1.57%** Grassland **3.97%**

Tax Year	Waste Land (1)				Other Agland (1)				Total Agricultural			
	Value	Value Chg	Ann%chg	Cmltv%chg	Value	Value Chg	Ann%chg	Cmltv%chg	Value	Value Chg	Ann%chg	Cmltv%chg
2014	91,955	-	-	-	167,130	-	-	-	1,279,210,530	-	-	-
2015	104,700	12,745	13.86%	13.86%	190,730	23,600	14.12%	14.12%	1,463,861,320	184,650,790	14.43%	14.43%
2016	116,325	11,625	11.10%	26.50%	211,140	20,410	10.70%	26.33%	1,524,934,300	61,072,980	4.17%	19.21%
2017	117,365	1,040	0.89%	27.63%	210,015	-1,125	-0.53%	25.66%	1,447,390,900	-77,543,400	-5.09%	13.15%
2018	116,970	-395	-0.34%	27.20%	208,390	-1,625	-0.77%	24.69%	1,419,966,065	-27,424,835	-1.89%	11.00%
2019	116,960	-10	-0.01%	27.19%	208,280	-110	-0.05%	24.62%	1,304,324,575	-115,641,490	-8.14%	1.96%
2020	117,399	439	0.38%	27.67%	208,269	-11	-0.01%	24.61%	1,221,131,381	-83,193,194	-6.38%	-4.54%
2021	354,195	236,796	201.70%	285.18%	830,085	621,816	298.56%	396.67%	1,234,513,375	13,381,994	1.10%	-3.49%
2022	352,080	-2,115	-0.60%	282.88%	1,893,660	1,063,575	128.13%	1033.05%	1,234,588,275	74,900	0.01%	-3.49%
2023	354,345	2,265	0.64%	285.35%	2,065,260	171,600	9.06%	1135.72%	1,386,202,520	151,614,245	12.28%	8.36%
2024	354,555	210	0.06%	285.57%	2,048,860	-16,400	-0.79%	1125.91%	1,734,740,835	348,538,315	25.14%	35.61%

Cnty# **70**  
County **PIERCE**

Rate Ann.%chg: Total Agric Land **3.09%**

**CHART 4 - AGRICULTURAL LAND - AVERAGE VALUE PER ACRE - Cumulative % Change 2014 - 2024 (from County Abstract Reports)(1)**

Tax Year	IRRIGATED LAND					DRYLAND					GRASSLAND				
	Value	Acres	Avg Value per Acre	Ann%chg AvgVal/acre	Cmltv%chg AvgVal/Acre	Value	Acres	Avg Value per Acre	Ann%chg AvgVal/acre	Cmltv%chg AvgVal/Acre	Value	Acres	Avg Value per Acre	Ann%chg AvgVal/acre	Cmltv%chg AvgVal/Acre
2014	727,965,355	152,651	4,769			460,746,515	117,012	3,938			91,119,675	66,342	1,373		
2015	822,781,705	152,634	5,391	13.04%	13.04%	534,890,860	118,324	4,521	14.81%	14.81%	104,921,760	64,905	1,617	17.70%	17.70%
2016	861,585,825	152,601	5,646	4.74%	18.39%	550,519,895	118,661	4,639	2.63%	17.82%	112,684,365	64,387	1,750	8.26%	27.42%
2017	813,569,395	152,755	5,326	-5.67%	11.68%	544,294,090	118,549	4,591	-1.04%	16.60%	112,623,805	64,396	1,749	-0.07%	27.33%
2018	797,338,885	152,857	5,216	-2.06%	9.38%	515,694,660	118,787	4,341	-5.44%	10.25%	106,526,355	63,982	1,665	-4.80%	21.22%
2019	725,792,750	152,843	4,749	-8.96%	-0.42%	468,400,440	118,520	3,952	-8.97%	0.37%	109,804,175	64,207	1,710	2.72%	24.51%
2020	709,349,210	153,059	4,634	-2.40%	-2.82%	401,758,880	118,337	3,395	-14.09%	-13.78%	109,643,460	64,122	1,710	-0.01%	24.49%
2021	710,649,340	153,268	4,637	0.05%	-2.77%	412,829,620	118,053	3,497	3.00%	-11.19%	110,163,735	64,195	1,716	0.36%	24.94%
2022	711,108,115	153,335	4,638	0.02%	-2.75%	411,962,710	117,890	3,494	-0.07%	-11.25%	109,971,175	64,073	1,716	0.02%	24.96%
2023	781,779,505	153,244	5,102	10.00%	6.98%	467,372,705	117,339	3,983	13.98%	1.16%	133,550,495	64,523	2,070	20.59%	50.70%
2024	1,057,542,945	153,594	6,885	34.97%	44.38%	538,806,180	117,740	4,576	14.89%	16.22%	134,910,045	64,051	2,106	1.76%	53.35%

Rate Annual %chg Average Value/Acre: 3.81% 1.58% 4.00%

Tax Year	WASTE LAND (2)					OTHER AGLAND (2)					TOTAL AGRICULTURAL LAND (1)				
	Value	Acres	Avg Value per Acre	Ann%chg AvgVal/acre	Cmltv%chg AvgVal/Acre	Value	Acres	Avg Value per Acre	Ann%chg AvgVal/acre	Cmltv%chg AvgVal/Acre	Value	Acres	Avg Value per Acre	Ann%chg AvgVal/acre	Cmltv%chg AvgVal/Acre
2014	89,900	2,255	40			164,635	4,116	40			1,280,086,080	342,376	3,739		
2015	103,810	2,315	45	12.45%	12.45%	188,965	4,199	45	12.52%	12.52%	1,462,887,100	342,377	4,273	14.28%	14.28%
2016	116,360	2,328	50	11.45%	25.32%	210,850	4,211	50	11.26%	25.19%	1,525,117,295	342,189	4,457	4.31%	19.21%
2017	117,215	2,341	50	0.19%	25.56%	11,379,220	9,869	1,153	2202.96%	2783.00%	1,481,983,725	347,910	4,260	-4.43%	13.93%
2018	117,020	2,337	50	-0.01%	25.55%	208,385	4,162	50	-95.66%	25.18%	1,419,885,305	342,125	4,150	-2.57%	11.00%
2019	116,960	2,336	50	0.01%	25.56%	208,245	4,160	50	-0.01%	25.17%	1,304,322,570	342,066	3,813	-8.12%	1.99%
2020	116,990	2,336	50	0.00%	25.57%	208,185	4,158	50	0.00%	25.18%	1,221,076,725	342,013	3,570	-6.37%	-4.51%
2021	353,040	2,352	150	199.72%	276.35%	830,090	4,151	200	299.46%	400.04%	1,234,825,825	342,019	3,610	1.12%	-3.44%
2022	352,090	2,346	150	0.00%	276.35%	1,734,355	4,447	390	95.02%	875.19%	1,235,128,445	342,091	3,611	0.00%	-3.43%
2023	352,635	2,350	150	0.00%	276.34%	2,066,705	4,558	453	16.24%	1033.58%	1,385,122,045	342,015	4,050	12.17%	8.32%
2024	354,555	2,363	150	0.00%	276.34%	2,064,365	4,547	454	0.14%	1035.23%	1,733,678,090	342,295	5,065	25.06%	35.47%

70  
PIERCE

Rate Annual %chg Average Value/Acre: 3.08%

(1) Valuations from County Abstracts vs Certificate of Taxes Levied Reports (CTL) will vary due to different reporting dates. Source: 2014 - 2024 County Abstract Reports  
Agland Assessment Level 1998 to 2006 = 80%; 2007 & forward = 75% NE Dept. of Revenue, Property Assessment Division Prepared as of 02/11/2025

CHART 5 - 2024 County and Municipal Valuations by Property Type

Pop.	County:	Personal Prop	StateAsd PP	StateAsdReal	Residential	Commercial	Industrial	Recreation	Agland	Agdwell&HS	AgImprv&FS	Minerals	Total Value
7,317	PIERCE	128,805,442	15,416,775	14,182,168	467,722,550	70,276,485	58,924,180	253,150	1,734,740,835	110,235,710	70,838,520	0	2,671,395,815
cnty sectorvalue % of total value:		4.82%	0.58%	0.53%	17.51%	2.63%	2.21%	0.01%	64.94%	4.13%	2.65%		100.00%
Pop.	Municipality:	Personal Prop	StateAsd PP	StateAsd Real	Residential	Commercial	Industrial	Recreation	Agland	Agdwell&HS	AgImprv&FS	Minerals	Total Value
42	FOSTER	61,226	203,239	6,686	1,499,430	327,695	0	0	11,295	0	0	0	2,109,571
0.57%	%sector of county sector	0.05%	1.32%	0.05%	0.32%	0.47%			0.00%				0.08%
	%sector of municipality	2.90%	9.63%	0.32%	71.08%	15.53%			0.54%				100.00%
280	HADAR	452,133	1,206	413	24,673,620	2,625,545	0	0	0	0	0	0	27,752,917
3.83%	%sector of county sector	0.35%	0.01%	0.00%	5.28%	3.74%							1.04%
	%sector of municipality	1.63%	0.00%	0.00%	88.90%	9.46%							100.00%
33	MCLEAN	161,650	36,313	212,930	1,166,385	28,965	0	0	0	0	0	0	1,606,243
0.45%	%sector of county sector	0.13%	0.24%	1.50%	0.25%	0.04%							0.06%
	%sector of municipality	10.06%	2.26%	13.26%	72.62%	1.80%							100.00%
794	OSMOND	3,240,848	1,040,178	552,041	44,556,520	17,148,065	0	0	56,620	0	0	0	66,594,272
10.85%	%sector of county sector	2.52%	6.75%	3.89%	9.53%	24.40%			0.00%				2.49%
	%sector of municipality	4.87%	1.56%	0.83%	66.91%	25.75%			0.09%				100.00%
1,845	PIERCE	1,902,535	2,167,596	110,789	119,640,340	14,465,405	0	0	0	0	0	0	138,286,665
25.22%	%sector of county sector	1.48%	14.06%	0.78%	25.58%	20.58%							5.18%
	%sector of municipality	1.38%	1.57%	0.08%	86.52%	10.46%							100.00%
1,282	PLAINVIEW	1,723,449	2,432,805	742,997	59,744,240	10,825,595	0	0	0	0	0	0	75,469,086
17.52%	%sector of county sector	1.34%	15.78%	5.24%	12.77%	15.40%							2.83%
	%sector of municipality	2.28%	3.22%	0.98%	79.16%	14.34%							100.00%
879	RANDOLPH	0	0	0	224,550	336,565	0	0	0	0	0	0	561,115
12.01%	%sector of county sector				0.05%	0.48%							0.02%
	%sector of municipality				40.02%	59.98%							100.00%
	%sector of county sector												
	%sector of municipality												
	%sector of county sector												
	%sector of municipality												
	%sector of county sector												
	%sector of municipality												
	%sector of county sector												
	%sector of municipality												
	%sector of county sector												
	%sector of municipality												
	%sector of county sector												
	%sector of municipality												
5,156	Total Municipalities	7,541,841	5,881,338	1,625,856	251,505,091	45,757,837	0	0	67,915	0	0	0	312,379,876
70.46%	%all municip.sectors of cnty	5.86%	38.15%	11.46%	53.77%	65.11%			0.00%				11.69%

70 PIERCE

Sources: 2024 Certificate of Taxes Levied CTL, 2020 US Census; Dec. 2024 Municipality Population per Research Division NE Dept. of Revenue, Property Assessment Division Prepared as of 02/11/2025