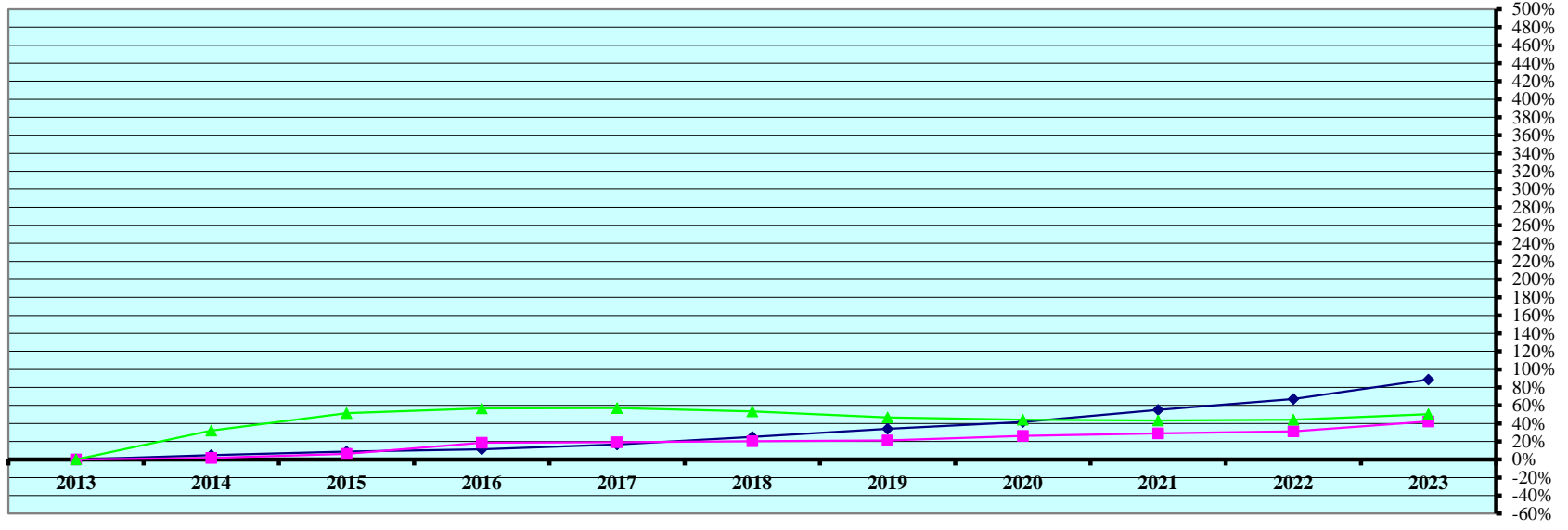


CHART 1 - REAL PROPERTY VALUATIONS - Cumulative % Change 2013 - 2023

ResRec
Comm&Indust
Total Agland



Tax Year	Residential & Recreational ⁽¹⁾				Commercial & Industrial ⁽¹⁾				Total Agricultural Land ⁽¹⁾			
	Value	Amnt Value Chg	Ann.%chg	Cmltv%chg	Value	Amnt Value Chg	Ann.%chg	Cmltv%chg	Value	Amnt Value Chg	Ann.%chg	Cmltv%chg
2013	1,307,127,370	-	-	-	607,756,110	-	-	-	1,521,775,090	-	-	-
2014	1,370,000,922	62,873,552	4.81%	4.81%	619,037,295	11,281,185	1.86%	1.86%	2,008,208,965	486,433,875	31.96%	31.96%
2015	1,420,286,969	50,286,047	3.67%	8.66%	645,609,700	26,572,405	4.29%	6.23%	2,305,352,485	297,143,520	14.80%	51.49%
2016	1,455,511,084	35,224,115	2.48%	11.35%	720,582,270	74,972,570	11.61%	18.56%	2,383,414,785	78,062,300	3.39%	56.62%
2017	1,524,021,281	68,510,197	4.71%	16.59%	723,691,605	3,109,335	0.43%	19.08%	2,390,731,085	7,316,300	0.31%	57.10%
2018	1,632,815,143	108,793,862	7.14%	24.92%	731,363,060	7,671,455	1.06%	20.34%	2,332,097,430	-58,633,655	-2.45%	53.25%
2019	1,750,492,823	117,677,680	7.21%	33.92%	736,986,455	5,623,395	0.77%	21.26%	2,230,277,995	-101,819,435	-4.37%	46.56%
2020	1,850,671,538	100,178,715	5.72%	41.58%	767,634,650	30,648,195	4.16%	26.31%	2,194,900,330	-35,377,665	-1.59%	44.23%
2021	2,025,647,032	174,975,494	9.45%	54.97%	783,376,433	15,741,783	2.05%	28.90%	2,181,585,395	-13,314,935	-0.61%	43.36%
2022	2,182,752,471	157,105,439	7.76%	66.99%	798,103,238	14,726,805	1.88%	31.32%	2,191,854,870	10,269,475	0.47%	44.03%
2023	2,467,085,791	284,333,320	13.03%	88.74%	864,231,278	66,128,040	8.29%	42.20%	2,287,245,450	95,390,580	4.35%	50.30%

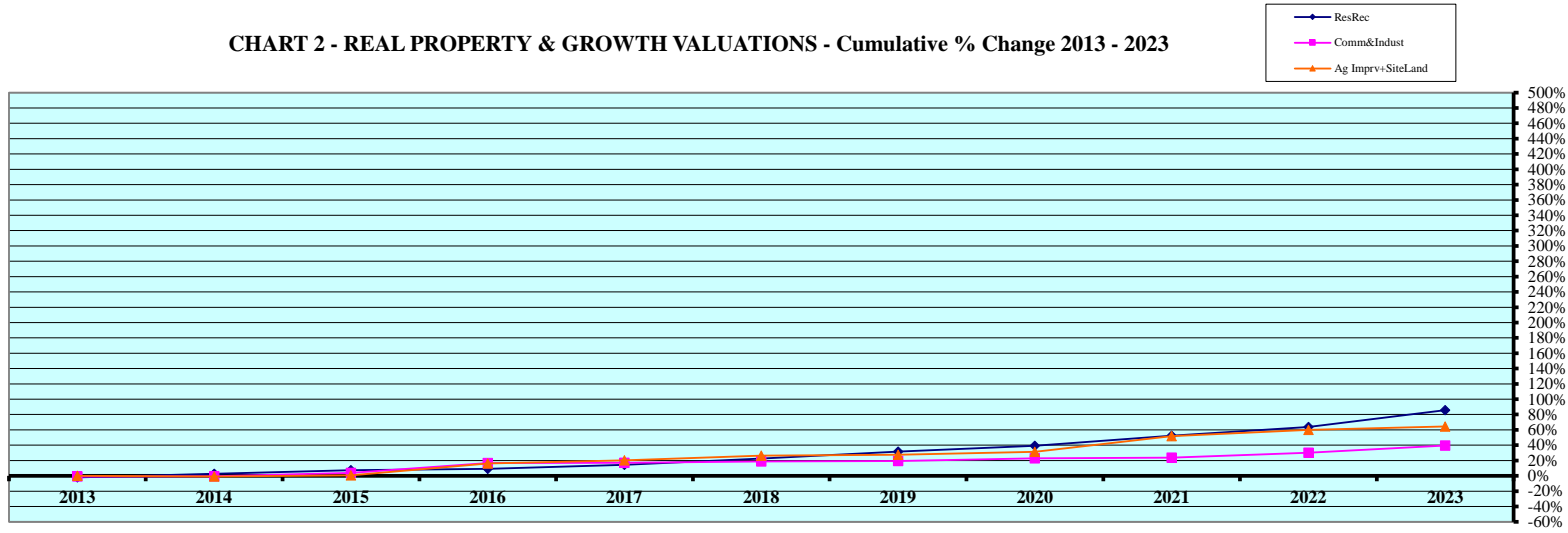
Rate Annual %chg: Residential & Recreational **6.56%** Commercial & Industrial **3.58%** Agricultural Land **4.16%**

Cnty# **71**
County **PLATTE**

CHART 1

(1) Residential & Recreational excludes Agric. dwelling & farm home site land. Commercial & Industrial excludes minerals. Agricultural land includes irrigated, dry, grass, waste, & other agland, excludes farm site land.

CHART 2 - REAL PROPERTY & GROWTH VALUATIONS - Cumulative % Change 2013 - 2023



Tax Year	Residential & Recreational ⁽¹⁾						Commercial & Industrial ⁽¹⁾					
	Value	Growth Value	% growth of value	Value Exclud. Growth	Ann.%chg w/o grwth	Cmltv%chg w/o grwth	Value	Growth Value	% growth of value	Value Exclud. Growth	Ann.%chg w/o grwth	Cmltv%chg w/o grwth
2013	1,307,127,370	26,609,635	2.04%	1,280,517,735	-	-2.04%	607,756,110	5,598,820	0.92%	602,157,290	-	-0.92%
2014	1,370,000,922	28,941,880	2.11%	1,341,059,042	2.60%	2.60%	619,037,295	14,003,690	2.26%	605,033,605	-0.45%	-0.45%
2015	1,420,286,969	17,772,790	1.25%	1,402,514,179	2.37%	7.30%	645,609,700	13,883,380	2.15%	631,726,320	2.05%	3.94%
2016	1,455,511,084	27,608,023	1.90%	1,427,903,061	0.54%	9.24%	720,582,270	11,376,200	1.58%	709,206,070	9.85%	16.69%
2017	1,524,021,281	28,174,545	1.85%	1,495,846,736	2.77%	14.44%	723,691,605	11,982,455	1.66%	711,709,150	-1.23%	17.10%
2018	1,632,815,143	29,226,333	1.79%	1,603,588,810	5.22%	22.68%	731,363,060	9,721,665	1.33%	721,641,395	-0.28%	18.74%
2019	1,750,492,823	29,056,296	1.66%	1,721,436,527	5.43%	31.70%	736,986,455	12,110,655	1.64%	724,875,800	-0.89%	19.27%
2020	1,850,671,538	32,617,135	1.76%	1,818,054,403	3.86%	39.09%	767,634,650	21,331,275	2.78%	746,303,375	1.26%	22.80%
2021	2,025,647,032	34,527,015	1.70%	1,991,120,017	7.59%	52.33%	783,376,433	32,089,800	4.10%	751,286,633	-2.13%	23.62%
2022	2,182,752,471	43,661,660	2.00%	2,139,090,811	5.60%	63.65%	798,103,238	6,152,245	0.77%	791,950,993	1.09%	30.31%
2023	2,467,085,791	39,881,280	1.62%	2,427,204,511	11.20%	85.69%	864,231,278	16,055,290	1.86%	848,175,988	6.27%	39.56%
Rate Ann%chg	6.56%		Resid & Recreat w/o growth			4.72%	3.58%		C & I w/o growth			1.56%

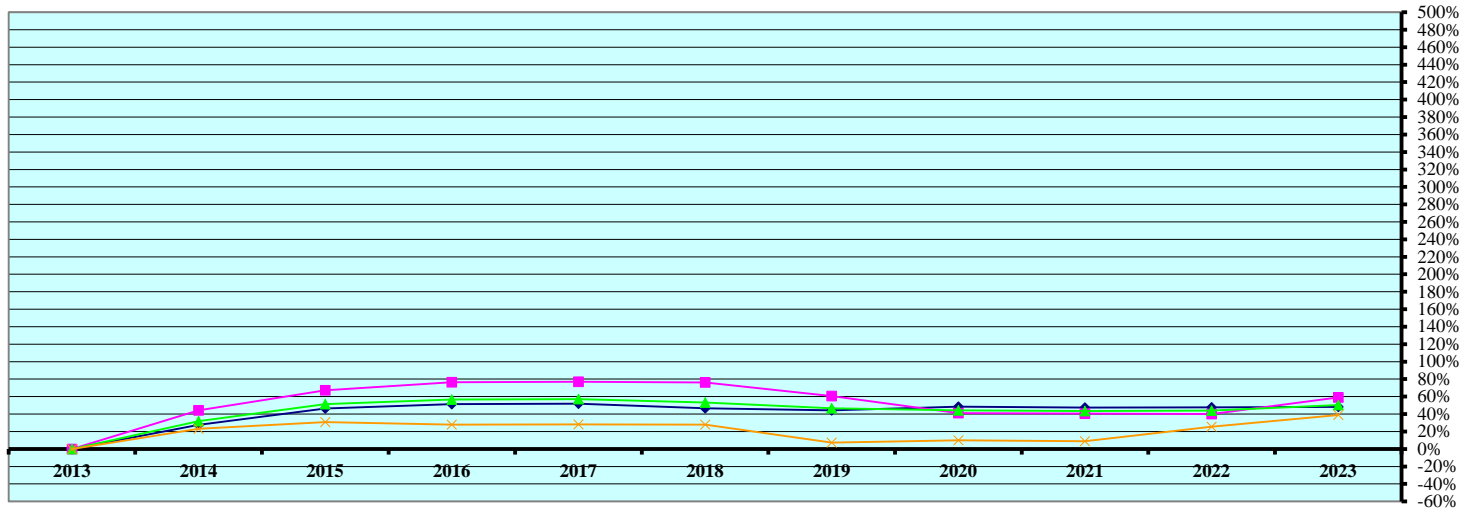
Tax Year	Ag Improvements & Site Land ⁽¹⁾							
	Agric. Dwelling & Homesite Value	Ag Outbldg & Farmsite Value	Ag Imprv+Site Total Value	Growth Value	% growth of value	Value Exclud. Growth	Ann.%chg w/o grwth	Cmltv%chg w/o grwth
2013	137,354,821	104,935,195	242,290,016	14,451,650	5.96%	227,838,366	-	-
2014	137,464,601	108,450,970	245,915,571	5,684,205	2.31%	240,231,366	-0.85%	-0.85%
2015	139,531,781	113,813,373	253,345,154	9,169,430	3.62%	244,175,724	-0.71%	0.78%
2016	148,038,251	144,466,983	292,505,234	10,913,825	3.73%	281,591,409	11.15%	16.22%
2017	154,120,580	150,194,325	304,314,905	13,170,180	4.33%	291,144,725	-0.47%	20.16%
2018	161,874,470	148,963,785	310,838,255	4,831,135	1.55%	306,007,120	0.56%	26.30%
2019	161,753,670	153,215,580	314,969,250	6,248,835	1.98%	308,720,415	-0.68%	27.42%
2020	178,703,340	157,329,090	336,032,430	17,911,515	5.33%	318,120,915	1.00%	31.30%
2021	202,054,510	189,499,855	391,554,365	23,923,445	6.11%	367,630,920	9.40%	51.73%
2022	215,593,525	180,593,585	396,187,110	8,233,170	2.08%	387,953,940	-0.92%	60.12%
2023	218,143,780	191,639,090	409,782,870	11,387,880	2.78%	398,394,990	0.56%	64.43%
Rate Ann%chg	4.73%	6.21%	5.40%	Ag Imprv+Site w/o growth		1.90%		

(1) Residential & Recreational excludes AgDwelling & farm home site land; Comm. & Indust. excludes minerals; Agric. land includes irrigated, dry, grass, waste & other agland, excludes farm site land. Real property growth is value attributable to new construction, additions to existing buildings, and any improvements to real property which increase the value of such property. Sources: Value; 2013 - 2023 CTL Growth Value; 2013 - 2023 Abstract of Asmnt Rpt. Prepared as of 12/29/2023

Cnty# 71
County PLATTE

CHART 2

CHART 3 - AGRICULTURAL LAND VALUATIONS - Cumulative % Change 2013 - 2023



Tax Year	Irrigated Land				Dryland				Grassland			
	Value	Value Chg	Ann%chg	Cmltv%chg	Value	Value Chg	Ann%chg	Cmltv%chg	Value	Value Chg	Ann%chg	Cmltv%chg
2013	1,010,310,465	-	-	-	438,563,030	-	-	-	60,085,670	-	-	-
2014	1,288,976,030	278,665,565	27.58%	27.58%	632,420,835	193,857,805	44.20%	44.20%	74,011,405	13,925,735	23.18%	23.18%
2015	1,479,097,320	190,121,290	14.75%	46.40%	733,832,500	101,411,665	16.04%	67.33%	78,576,425	4,565,020	6.17%	30.77%
2016	1,529,991,850	50,894,530	3.44%	51.44%	773,667,980	39,835,480	5.43%	76.41%	76,831,145	-1,745,280	-2.22%	27.87%
2017	1,534,311,935	4,320,085	0.28%	51.87%	776,159,155	2,491,175	0.32%	76.98%	77,027,910	196,765	0.26%	28.20%
2018	1,480,033,630	-54,278,305	-3.54%	46.49%	772,057,035	-4,102,120	-0.53%	76.04%	76,793,380	-234,530	-0.30%	27.81%
2019	1,457,889,835	-22,143,795	-1.50%	44.30%	704,281,935	-67,775,100	-8.78%	60.59%	64,422,350	-12,371,030	-16.11%	7.22%
2020	1,499,606,775	41,716,940	2.86%	48.43%	619,140,410	-85,141,525	-12.09%	41.17%	66,120,565	1,698,215	2.64%	10.04%
2021	1,489,388,535	-10,218,240	-0.68%	47.42%	616,687,885	-2,452,525	-0.40%	40.62%	65,490,265	-630,300	-0.95%	8.99%
2022	1,492,801,230	3,412,695	0.23%	47.76%	613,629,120	-3,058,765	-0.50%	39.92%	75,435,175	9,944,910	15.19%	25.55%
2023	1,496,531,175	3,729,945	0.25%	48.13%	697,341,695	83,712,575	13.64%	59.01%	83,448,900	8,013,725	10.62%	38.88%

Rate Ann.%chg: Irrigated **4.01%** Dryland **4.75%** Grassland **3.34%**

Tax Year	Waste Land ⁽¹⁾				Other Agland ⁽¹⁾				Total Agricultural			
	Value	Value Chg	Ann%chg	Cmltv%chg	Value	Value Chg	Ann%chg	Cmltv%chg	Value	Value Chg	Ann%chg	Cmltv%chg
2013	255,905	-	-	-	12,560,020	-	-	-	1,521,775,090	-	-	-
2014	257,350	1,445	0.56%	0.56%	12,543,345	-16,675	-0.13%	-0.13%	2,008,208,965	486,433,875	31.96%	31.96%
2015	260,115	2,765	1.07%	1.65%	13,586,125	1,042,780	8.31%	8.17%	2,305,352,485	297,143,520	14.80%	51.49%
2016	40,450	-219,665	-84.45%	-84.19%	2,883,360	-10,702,765	-78.78%	-77.04%	2,383,414,785	78,062,300	3.39%	56.62%
2017	284,810	244,360	604.10%	11.30%	2,947,275	63,915	2.22%	-76.53%	2,390,731,085	7,316,300	0.31%	57.10%
2018	289,640	4,830	1.70%	13.18%	2,923,745	-23,530	-0.80%	-76.72%	2,332,097,430	-58,633,655	-2.45%	53.25%
2019	769,905	480,265	165.81%	200.86%	2,913,970	-9,775	-0.33%	-76.80%	2,230,277,995	-101,819,435	-4.37%	46.56%
2020	705,780	-64,125	-8.33%	175.80%	9,326,800	6,412,830	220.07%	-25.74%	2,194,900,330	-35,377,665	-1.59%	44.23%
2021	703,975	-1,805	-0.26%	175.09%	9,314,735	-12,065	-0.13%	-25.84%	2,181,585,395	-13,314,935	-0.61%	43.36%
2022	686,300	-17,675	-2.51%	168.19%	9,303,045	-11,690	-0.13%	-25.93%	2,191,854,870	10,269,475	0.47%	44.03%
2023	699,285	12,985	1.89%	173.26%	9,224,395	-78,650	-0.85%	-26.56%	2,287,245,450	95,390,580	4.35%	50.30%

Cnty# **71**
County **PLATTE**

Rate Ann.%chg: Total Agric Land **4.16%**

CHART 4 - AGRICULTURAL LAND - AVERAGE VALUE PER ACRE - Cumulative % Change 2013 - 2023 (from County Abstract Reports)(1)

Tax Year	IRRIGATED LAND					DRYLAND					GRASSLAND				
	Value	Acres	Avg Value per Acre	Ann%chg AvgVal/acre	Cmltv%chg AvgVal/Acre	Value	Acres	Avg Value per Acre	Ann%chg AvgVal/acre	Cmltv%chg AvgVal/Acre	Value	Acres	Avg Value per Acre	Ann%chg AvgVal/acre	Cmltv%chg AvgVal/Acre
2013	1,010,500,885	212,372	4,758			438,175,810	122,848	3,567			60,361,005	49,318	1,224		
2014	1,286,481,970	214,872	5,987	25.83%	25.83%	634,700,370	120,988	5,246	47.08%	47.08%	73,645,680	48,650	1,514	23.68%	23.68%
2015	1,479,652,135	215,930	6,852	14.45%	44.01%	734,378,210	119,978	6,121	16.68%	71.61%	78,228,015	48,458	1,614	6.64%	31.90%
2016	1,529,181,700	213,546	7,161	4.50%	50.50%	774,732,080	121,566	6,373	4.12%	78.67%	76,802,945	48,839	1,573	-2.59%	28.49%
2017	1,534,760,420	213,283	7,196	0.49%	51.23%	776,594,610	121,314	6,402	0.45%	79.47%	76,998,235	49,098	1,568	-0.28%	28.13%
2018	1,480,379,190	213,530	6,933	-3.65%	45.70%	772,444,085	120,659	6,402	0.01%	79.49%	76,729,330	49,321	1,556	-0.80%	27.11%
2019	1,469,967,955	213,444	6,887	-0.66%	44.74%	707,520,070	120,274	5,883	-8.11%	64.93%	67,726,850	49,487	1,369	-12.03%	11.82%
2020	1,500,360,815	213,135	7,039	2.22%	47.95%	619,663,950	119,152	5,201	-11.59%	45.81%	65,816,535	46,481	1,416	3.46%	15.69%
2021	1,489,240,750	213,107	6,988	-0.73%	46.87%	617,138,665	118,786	5,195	-0.10%	45.66%	65,533,185	46,471	1,410	-0.41%	15.22%
2022	1,490,957,855	213,358	6,988	0.00%	46.86%	614,912,565	118,389	5,194	-0.03%	45.62%	75,488,395	46,299	1,630	15.62%	33.21%
2023	1,495,111,960	213,925	6,989	0.01%	46.88%	698,992,085	117,418	5,953	14.61%	66.90%	83,929,495	46,206	1,816	11.41%	48.41%

Rate Annual %chg Average Value/Acre: 3.92%

5.26%

4.03%

Tax Year	WASTE LAND (2)					OTHER AGLAND (2)					TOTAL AGRICULTURAL LAND (1)				
	Value	Acres	Avg Value per Acre	Ann%chg AvgVal/acre	Cmltv%chg AvgVal/Acre	Value	Acres	Avg Value per Acre	Ann%chg AvgVal/acre	Cmltv%chg AvgVal/Acre	Value	Acres	Avg Value per Acre	Ann%chg AvgVal/acre	Cmltv%chg AvgVal/Acre
2013	255,655	2,557	100			2,936,275	3,438	854			1,512,229,630	390,532	3,872		
2014	254,990	2,550	100	0.00%	0.00%	3,001,810	3,493	859	0.61%	0.61%	1,998,084,820	390,554	5,116	32.12%	32.12%
2015	257,605	2,576	100	0.01%	0.00%	2,989,745	3,463	863	0.46%	1.08%	2,295,505,710	390,405	5,880	14.93%	51.85%
2016	274,645	2,746	100	0.01%	0.01%	2,887,835	3,370	857	-0.74%	0.33%	2,383,879,205	390,068	6,111	3.94%	57.83%
2017	284,830	2,848	100	-0.01%	0.00%	2,955,125	3,474	851	-0.74%	-0.41%	2,391,593,220	390,018	6,132	0.34%	58.36%
2018	289,680	2,897	100	-0.01%	-0.01%	2,927,820	3,469	844	-0.78%	-1.19%	2,332,770,105	389,877	5,983	-2.42%	54.52%
2019	288,700	2,887	100	0.00%	-0.01%	2,939,215	3,465	848	0.52%	-0.67%	2,248,442,790	389,557	5,772	-3.54%	49.06%
2020	691,280	6,913	100	0.01%	0.00%	9,335,600	3,468	2,692	217.28%	215.15%	2,195,868,180	389,151	5,643	-2.24%	45.72%
2021	704,095	7,041	100	0.00%	0.00%	9,351,600	3,455	2,706	0.55%	216.89%	2,181,968,295	388,860	5,611	-0.56%	44.91%
2022	686,545	6,875	100	-0.12%	-0.13%	9,305,055	3,419	2,722	0.57%	218.70%	2,191,350,415	388,339	5,643	0.56%	45.73%
2023	699,715	7,007	100	-0.01%	-0.13%	9,204,400	3,430	2,683	-1.43%	214.16%	2,287,937,655	387,985	5,897	4.50%	52.29%

71
PLATTE

Rate Annual %chg Average Value/Acre: 4.30%

(1) Valuations from County Abstracts vs Certificate of Taxes Levied Reports (CTL) will vary due to different reporting dates. Source: 2013 - 2023 County Abstract Reports
Agland Assessment Level 1998 to 2006 = 80%; 2007 & forward = 75% NE Dept. of Revenue, Property Assessment Division Prepared as of 12/29/2023

CHART 5 - 2023 County and Municipal Valuations by Property Type

Pop.	County:	Personal Prop	StateAsd PP	StateAsdReal	Residential	Commercial	Industrial	Recreation	Agland	Agdwell&HS	AgImprv&FS	Minerals	Total Value
34,296	PLATTE	380,105,144	46,744,447	111,571,847	2,458,487,731	583,644,253	280,587,025	8,598,060	2,287,245,450	218,143,780	191,639,090	166,575	6,566,933,402
cnty sectorvalue % of total value:		5.79%	0.71%	1.70%	37.44%	8.89%	4.27%	0.13%	34.83%	3.32%	2.92%	0.00%	100.00%
Pop.	Municipality:	Personal Prop	StateAsd PP	StateAsd Real	Residential	Commercial	Industrial	Recreation	Agland	Agdwell&HS	AgImprv&FS	Minerals	Total Value
24,028	COLUMBUS	82,971,898	11,944,974	11,606,621	1,708,638,601	449,366,740	25,451,945	301,470	0	0	0	0	2,290,282,249
70.06%	%sector of county sector	21.83%	25.55%	10.40%	69.50%	76.99%	9.07%	3.51%					34.88%
	%sector of municipality	3.62%	0.52%	0.51%	74.60%	19.62%	1.11%	0.01%					100.00%
33	CORNLEA	520,363	0	0	1,930,225	777,605	0	0	0	0	0	0	3,228,193
0.10%	%sector of county sector	0.14%			0.08%	0.13%							0.05%
	%sector of municipality	16.12%			59.79%	24.09%							100.00%
181	CRESTON	420,342	1,923	434	9,863,955	2,551,795	0	0	6,210	0	0	0	12,844,659
0.53%	%sector of county sector	0.11%	0.00%	0.00%	0.40%	0.44%			0.00%	0.44%			0.20%
	%sector of municipality	3.27%	0.01%	0.00%	76.79%	19.87%			0.05%				100.00%
392	DUNCAN	50,755	366,670	2,578,549	28,076,070	4,206,190	886,270	0	133,615	0	192,820	0	36,490,939
1.14%	%sector of county sector	0.01%	0.78%	2.31%	1.14%	0.72%	0.32%		0.01%		0.10%		0.56%
	%sector of municipality	0.14%	1.00%	7.07%	76.94%	11.53%	2.43%		0.37%		0.53%		100.00%
905	HUMPHREY	4,347,644	481,905	1,177,749	84,972,175	22,646,430	0	0	0	0	0	0	113,625,903
2.64%	%sector of county sector	1.14%	1.03%	1.06%	3.46%	3.88%							1.73%
	%sector of municipality	3.83%	0.42%	1.04%	74.78%	19.93%							100.00%
283	LINDSAY	12,048,212	205,591	21,441	21,832,170	9,608,410	5,039,560	0	0	0	0	0	48,755,384
0.83%	%sector of county sector	3.17%	0.44%	0.02%	0.89%	1.65%	1.80%						0.74%
	%sector of municipality	24.71%	0.42%	0.04%	44.78%	19.71%	10.34%						100.00%
296	MONROE	4,830,417	201,379	705,578	15,613,695	19,413,630	0	0	0	0	0	0	40,764,699
0.86%	%sector of county sector	1.27%	0.43%	0.63%	0.64%	3.33%							0.62%
	%sector of municipality	11.85%	0.49%	1.73%	38.30%	47.62%							100.00%
667	NEWMAN GROVE	17	3,885	367	543,770	0	0	0	0	0	0	0	548,039
1.94%	%sector of county sector	0.00%	0.01%	0.00%	0.02%								0.01%
	%sector of municipality	0.00%	0.71%	0.07%	99.22%								100.00%
333	PLATTE CENTER	286,214	139,793	729,250	20,256,105	2,032,095	0	0	0	0	33,420	0	23,476,877
0.97%	%sector of county sector	0.08%	0.30%	0.65%	0.82%	0.35%					0.02%		0.36%
	%sector of municipality	1.22%	0.60%	3.11%	86.28%	8.66%					0.14%		100.00%
52	TARNOV	4,189	20,395	210,796	1,922,715	135,460	0	0	14,265	0	905	0	2,308,725
0.15%	%sector of county sector	0.00%	0.04%	0.19%	0.08%	0.02%			0.00%	0.02%	0.00%		0.04%
	%sector of municipality	0.18%	0.88%	9.13%	83.28%	5.87%			0.62%		0.04%		100.00%
	%sector of county sector												
	%sector of municipality												
	%sector of county sector												
	%sector of municipality												
	%sector of county sector												
	%sector of municipality												
	%sector of county sector												
	%sector of municipality												
27,171	Total Municipalities	105,480,052	13,366,515	17,030,785	1,893,649,489	510,738,358	31,377,775	301,470	154,090	0	227,145	0	2,572,325,677
79.22%	%all municip.sectors of cnty	27.75%	28.59%	15.26%	77.02%	87.51%	11.18%	3.51%	0.01%		0.12%		39.17%