

THE SPORTS ARENA FACILITIES FINANCING
ASSISTANCE ACT

Promotion of Arts and Cultural Events

July 2, 2024



**omaha
performing
arts**

July 2, 2024

Nebraska Department of Revenue
301 Centennial Mall South
Lincoln, NE 6509-4818
Attn: James R. Kamm, Tax Commissioner

Dear Commissioner Kamm,

The City of Omaha and Omaha Performing Arts (“O-pa”) respectfully requests consideration for funding through the Sports Arena Facility Financing Assistance Act to support promotion of Arts and Cultural Events. O-pa will host art education activities, community engagement events and other special events.

Through collaboration with local representatives throughout the arts and education community, O-pa realized the need for an increased number of spaces devoted to arts education and engagement opportunities as well as a space to host public and private events. The Tenaska Center, first envisioned in 2015, will allow O-pa to grow its current programs, offer new programs, and broaden its offerings to a wider range of participants.

The attached draft application includes the following:

- Resolution approving the Project
- Project Overview
- Pro-Forma Budget
- Description of the Programming and how Programming will be in furtherance of the public use or purpose
- O-pa Campus Site Map
- Map of the Turnback Zone
- Renderings
- Floor Plan

If you have any questions or concerns, please reach out to Burke Harr at bharr@hougtonbradford.com or (402) 651-2528.

Thank you for your consideration of this request.

TABLE OF CONTENTS

	<u>Page Number</u>
Cover Page	1
Cover Letter	2
Table of Contents	3
Description of Concert Venue	4
Description of Programs for Promotion of Arts and Cultural Events	5-8
Pro Forma Budget for Promotion of Arts and Cultural Events	9
Arts and Cultural Events List of Programs	10
Site Map	11
Rendering of Tenaska Center for Arts Engagement	12-16
Resolution	17-19
Turnback Tax Zone	20-21
Turnback Tax Revenue	22-24

OMAHA PERFORMING ARTS Steelhouse Omaha

Steelhouse Omaha is a live music venue managed by Omaha Performing Arts (O-pa) that brings exclusive tours to Omaha. O-pa is steward to three landmark Nebraska venues, the Orpheum Theater, Holland Performing Arts Center, and Steelhouse Omaha. O-pa presents a wide spectrum of performing arts, including Broadway, jazz, dance comedy, family, popular entertainment, and live music. With a commitment to inclusion, diversity, equity and accessibility, O-pa serves a growing audience in Omaha and the region through a broad range of education and engagement opportunities. As Nebraska's largest arts institution, O-pa is recognized as a leader both locally and nationally.

Located at 11th and Dodge Streets in downtown Omaha, Steelhouse presents touring acts who previously bypassed the city by providing a venue that accommodates up to but not more than 3,000 fans. Under an exclusive promoter partnership with Live Nation, Steelhouse features both up and coming bands and established performers from a wide variety of genres including alternative, rock, hip hop, indie, rap, heavy metal, mixed genres, and more. Steelhouse also provides local artists and organizations with the opportunity to present programs in non-traditional layouts.

Steelhouse offers unique backstage rooms and lounges for musicians and their crews to have comfortable spaces off the tour buses, as well as a commercial kitchen that can provide top level catering and food service. The venue has an enclosed loading dock built to accommodate two semitrucks with easy access to the stage. The sound and lighting systems provide "plug and play" state-of-the-art equipment.

The sound environment of Steelhouse is the first of its kind for this type of venue and will provide a unique concert experience. Every element in the room was designed to optimize amplified sound across all frequencies, with specific attention to enveloping fans in the music. Additionally, multiple bars are inside the concert hall offering easy access to food and beverages during the performance.

Steelhouse will further activate the expansion of downtown Omaha from the Old Market to the south through the revitalized Gene Leahy Mall to the Capitol District to the north and will support attracting and retaining the workforce by providing another key entertainment option.

The Steelhouse cost \$104.1M. The project was almost entirely privately funded with assistance from the city of Omaha for \$1.1M and from the state of Nebraska through the Shovel Ready Capital Recovery and Investment Act.

An impact study by the University of Nebraska-Lincoln estimates the annual economic impact of Steelhouse to be \$13M.

ARTS AND CULTURAL PROGRAMMING EXPANSION AND USE OF FUNDS IN CONNECTION WITH THE TENASKA CENTER FOR ARTS ENGAGEMENT

Overview

The intent of the City of Omaha and the Omaha Performing Arts (O-pa) is to use sales tax turnback proceeds from the Steelhouse to be used for the promotion of arts and cultural events for a period of 10 years. O-pa is the largest arts institution in Nebraska with over 5.5 million visitors to its venues, the Holland Performing Arts Center, Orpheum Theater, and Steelhouse Omaha over the past 18 years. Annually, O-pa hosts more than 550 events in its facilities and presents world-renowned artists and productions in jazz, dance, touring Broadway, popular entertainers, world music, family, speakers and more.

O-pa's venues consistently rank among the top venues in the country and world. The organization reaches all parts of the community and attracts students from across Nebraska to its extensive education and engagement activities.

Thanks to generous contributions from the Howard and Rhonda Hawks Foundation and Tenaska Energy, the newest addition to O-pa's campus will be the Tenaska Center for Arts Engagement. The Tenaska Center for Arts Engagement will offer additional rehearsal, workshop and classroom spaces to accommodate O-pa's expanding education and community engagement programs. The new facility is projected to cost \$108 million and will be located east of the Holland Center at 12th street between Dodge and Douglas Street and south of the Steelhouse. The new building will help complete the O-pa campus.

Each year, O-pa already engages more than 100,000 students, teachers and community participants in a variety of education and community engagement programs from kindergarten through high school and lifelong learners of all ages. Developing and presenting education and engagement programs that are meaningful and have a significant impact on the community are key to fulfilling O-pa's mission. By utilizing the exceptional resources of the national and international artists that perform at its venues, as well as enthusiastic arts leaders and educators from the community, O-pa provides many unique educational opportunities for the region. Activities are inclusive and bring the arts to diverse populations, including low-income, at-risk and the geographically underserved.

Over the last ten years, O-pa has developed significant K-12 education programs with national partners. These programs continue to grow and currently engage 19,000 students and teachers annually at schools across the state.

O-pa offers a wide range of other opportunities through its community engagement programs both inside our venues and out in the community. Workshops, artist residencies, and community gathering activities are key components of O-pa's programming. In recent years, these programs have increased substantially and will continue to expand with the new addition to our campus.

Need

With the expansion of O-pa's education and engagement programs, the organization has outgrown its current facilities at the Holland Performing Arts Center. The programs held in the Holland's Cassling Education Studio and the Scott Hall are at or over capacity, with students and participants meeting in lobby spaces, backstage, and other areas not conducive to learning. Also, due to the lack of space, O-pa is unable to grow its current programs or offer any new programs. O-pa is not able to expand summer performing arts camps or broaden its offerings to a wider range of participants.

After interviews with representatives throughout the arts and education community it became clear that other, less established arts organizations with smaller audiences and budgets, were also in need of places to rehearse and to perform. The new education and engagement center will greatly benefit not only O-pa, but other arts and cultural institutions in our community.

O-pa is in need of dedicated event space to host the various community events that currently occur in the lobbies and Scott Hall. These events bring in community members for fundraising activities, private events such as weddings, and corporate meetings, and workshops, all of which provide a source of earned revenue. Most of all, O-pa's education and engagement growth potential is limited due to lack of space. The new Tenaska Center for Arts Engagement building will benefit O-pa, the City of Omaha, and state of Nebraska.

Project Description

As part of its Campus Expansion Plan, Omaha Performing Arts has prepared for Phase II to construct the Tenaska Center for Arts Engagement. The 100,000-square-foot facility will feature rehearsal rooms and multiple classroom and studios spaces for all types of performing arts. Additionally, it will include an Event Center to host special events (weddings, receptions, corporate events/parties, etc.). The new Tenaska Center for Arts Engagement will increase O-pa's activity from 731 events currently to over 2,224 events.

The Tenaska Center for Arts Engagement will feature various spaces of different sizes to accommodate a range of activities. The facility will enable O-pa to offer new programs such as year-round classes and camps including subjects not offered in Omaha such as concert producing and promotion, recording, and entertainment business. It will also

serve as a resource for teachers seeking training and professional development opportunities.

The facility will provide smaller arts organizations places to rehearse and perform allowing these groups to reach a greater range of patrons. Additionally, it will support the education initiatives of our resident companies, Opera Omaha and the Omaha Symphony and other key partners.

The Tenaska Center for Arts Engagement will be located on the green lawn east of the Holland Center and south of the new Steelhouse Omaha, allowing O-pa to fully utilize its properties and complete its campus. The main entrance will be on Dodge Street and will also be accessible and connect to the Holland Center's Cassling Education Center (north side of building). The Event Center's main entrance will be on Douglas Street (across from the newly renovated Gene Leahy Mall) and will also be accessible and connect to the Holland Center's FNBO Lobby (south side of building). The existing Arrival Plaza on 12th Street (between Dodge and Douglas) will continue to serve as a pass-through for vehicle drop-offs for all patrons, parking for valet services and will include additional parking stalls underneath.

Project Timeline and Cost

The design development and construction documents have been completed. To date, two lead gifts to name the venue and the campus have been secured, along with other pledges for a total of \$103.4M. This campaign is a more traditional campaign and includes significant naming opportunities of the various major spaces within it. The Board of Directors have approved this project to proceed and the design concepts and structural construction will take approximately two years to build. The current cost estimation is approximately \$108M. The funds obtained will not be used for construction of the building. The funds will be used in furtherance of the arts and culture events described above. A list of the costs of the programming is attached to this application.

Program Description

The state assistance will be used to provide funding for promotion of arts and cultural events. Specifically, O-pa will use the funds to promote its learn and engage program. A full listing of programming is attached. A summary of the programs include, for the community, O-pa will provide the following programs:

- Hip Hop Lab: Educate, elevate, and amplify the legacy surrounding the impact, performance, history, and culture of Hip Hop;
- Voice AMPLIFIED: Thematic series music, dance, spoken word, and visual arts that celebrates artists from diverse cultures and connects the Omaha community with opportunities for discussion, reflection, and new experiences;

- Arts Access: subsidized tickets to community organizations serving populations lacking adequate access to the performing arts;
- Jazz on the Green: free summer jazz concert series;
- Music at Miller Park: Free community-sponsored outdoor summer concert series at the Miller Park Pavilion (2707 Redick Ave) celebrating North Omaha's rich musical history; and
- Curtain Warmers: Preshow programming to enhance and invite audiences into a show to provide deeper connection and engagement with the arts.

For students and teachers, O-pa will provide the following programs:

- Broadway Day Camp: Aimed at grades 4-8, builds confidence, teamwork, and social/emotional learning skills through Broadway plays;
- Omaha Wolf Trap: Aimed at children ages 3-6, arts education program for local schools, community organizations, and parents;
- Musical Explorers: Free program for teachers and elementary music teachers, builds basic music skills as students learn songs from different cultures;
- Student Matinee Series: Daytime shows that connect with school subjects and state standards;
- Disney Musicals in Schools: Aimed at grades 3-6, after school program provides resources to build musical programs in elementary schools;
- Jazz Academy: Aimed at grades 7+, supports and fosters quality jazz education through workshops, lessons, and ensemble experiences;
- Theater Essentials Online: Video lessons on acting, dance, technical theater and more led by local professionals and available statewide;
- Nebraska High School Theater Academy: Supports, celebrates and advocates for theater education in schools across the state; and
- Master Classes and Workshops: Hands on training experiences with professional artists for students, educators, and community members.

O-pa is a vital part of the Omaha community, providing leadership within the performing arts, improving quality of life, and contributing an annual economic impact of \$61M to Douglas County. With the addition of the Tenaska Center for Arts Engagement and the new programming, O-pa will be better able to achieve its mission of enriching the community through education and community engagement programs while also serving as a resource for other community organizations.

PROMOTION OF ARTS AND CULTURAL EVENTS-PRO FORMA BUDGET

	Revenues		TCAE Opens				
	FY24 Budget	FY25	Spring FY26	FY27	FY28	FY29	
School Programs/Master Classes	77,475	81,199	93,559	102,562	109,715	121,525	
Tuition-Based Classes and Workshops	8,250	30,220	90,940	306,930	442,605	526,535	
Community Engagement	15,000	15,000	30,000	30,000	30,000	30,000	
Total Revenue	100,725	126,419	214,499	439,492	582,320	678,060	
Expenses							
School Programs/Master Classes	438,086	459,990	482,990	507,139	532,496	559,121	
Tuition-Based Classes and Workshops	7,800	28,475	78,270	208,545	303,710	363,510	
Community Engagement	353,083	370,737	389,274	408,738	429,175	450,633	
Other Operating Expenses	10,247	10,759	11,297	11,862	12,455	13,078	
Total Expense	809,216	869,962	961,831	1,136,284	1,277,836	1,386,342	
Net Operating	(708,491)	(743,543)	(747,332)	(696,793)	(695,516)	(708,282)	
Education Labor	354,159	478,325	662,458	798,957	940,915	1,033,552	
Full-Time Count	6	8	11	13	15	16	
Part-Time Count	1	1	1	1	1	1	
Benefits	88,540	119,581	165,615	199,739	235,229	258,388	
Total Labor	442,699	597,907	828,073	998,696	1,176,144	1,291,939	
TCAE Overhead Expense (insurance, utilities and maintenance)			347,200	715,232	715,232	715,232	
Total Labor & Overhead	442,699	597,907	1,175,273	1,713,928	1,891,376	2,007,171	
Net Before Contributions	(1,151,190)	(1,341,450)	(1,922,605)	(2,410,720)	(2,586,892)	(2,715,453)	
Contributed Revenue - Designated	404,000	629,000	679,000	729,000	729,000	729,000	
Contributed Revenue - Non-Designated	175,000	629,000	679,000	729,000	729,000	729,000	
Total Contributed Revenue	579,000	629,000	679,000	729,000	729,000	729,000	
Net Income Before Additional Funding	(572,190)	(712,450)	(1,243,605)	(1,681,720)	(1,857,892)	(1,986,453)	

PROMOTION OF ARTS AND CULTURAL EVENTS - PROGRAMMING

DANCE & MOVEMENT	
Ballet Hispanico "Los Pasitos" Dance Class	Early Childhood
Ballet Hispanico Open Dance Class I	Elementary
Ballet Hispanico Open Dance Class II	Middle - High School
Ballet Hispanico Open Dance Class III	High School - Adult
Ballet Hispanico Pre-Professional Training I	Middle - High School
Ballet Hispanico Pre-Professional Training II	High School - Adult
Ballet Hispanico Pre-Professional Audition Class	High School - Adult
Ballet Hispanico Social Dance Class	Adult
"Love to Groove" Dance Fitness Class	Adult
Youth Circus Fundamentals	Elementary
Circus Fundamentals I	Middle - High School
Circus Fundamentals II	High School - Adult
Ballet Hispanico "Get On Your Feet!" Class	Elementary (boys)
Ballet Hispanico Pre-Professional Choreography	High School - Adult

BROADWAY & THEATER	
Broadway Preschool - Creative Drama Class	Early Childhood
Broadway Elementary - Musical Theater Class	Elementary
Broadway Middle School - Musical Theater Class	Middle School
Broadway Middle School - Tech & Design Class	Middle School
Broadway Backstage Class (topic 1)	High School - Adult
Broadway Backstage Class (topic 2)	High School - Adult
Broadway Pre-Professional Training - Book the Audition	High School - Adult
Broadway Pre-Professional Training - Biz of the Biz	High School - Adult
Broadway for Older Adults Class	Adult
Broadway Bound College Audition Prep (fall only)	High School
Broadway Pre-Professional Training - Stage Combat	High School - Adult
Comedy Class	High School - Adult
Broadway Backstage Class (topic 3)	High School - Adult
Commercial Voiceover Class	High School - Adult

MUSIC	
Jazz Academy Ensemble Class II	Middle School
Musical Explorers Class (spring only)	Elementary
Jazz Academy Ensemble Class III	High School
Rusty Musicians Ensemble Class	Adult
Jazz for Older Adults Class	Adult
Jazz Academy Ensemble Class I	Elementary
Songwriting Class	High School - Adult
Community Rhythms Drumming Class	High School - Adult
Youth Songwriting Class	Middle School

FAMILY & HOMESCHOOL	
Wolf Trap ArtsPlay!™ Family Class	Parent/Child (ages 3-5)
Wolf Trap Baby ArtsPlay!™ Family Class	Parent/Child (ages 0-2)
Broadway Baby Family Class	Parent/Child (ages 0-2)
Family Dance Party	Parent/Child (all ages)
Performing Arts for Homeschool	Middle - High School
Music and Me Family Class	Parent/Child (ages 3-5)
Young Performing Arts for Homeschool	Elementary
STEAM Studio - Family Class	Parent/Child (all ages)
Indigenous Culture, Dance & Music - Family Class	Parent/Child (all ages)

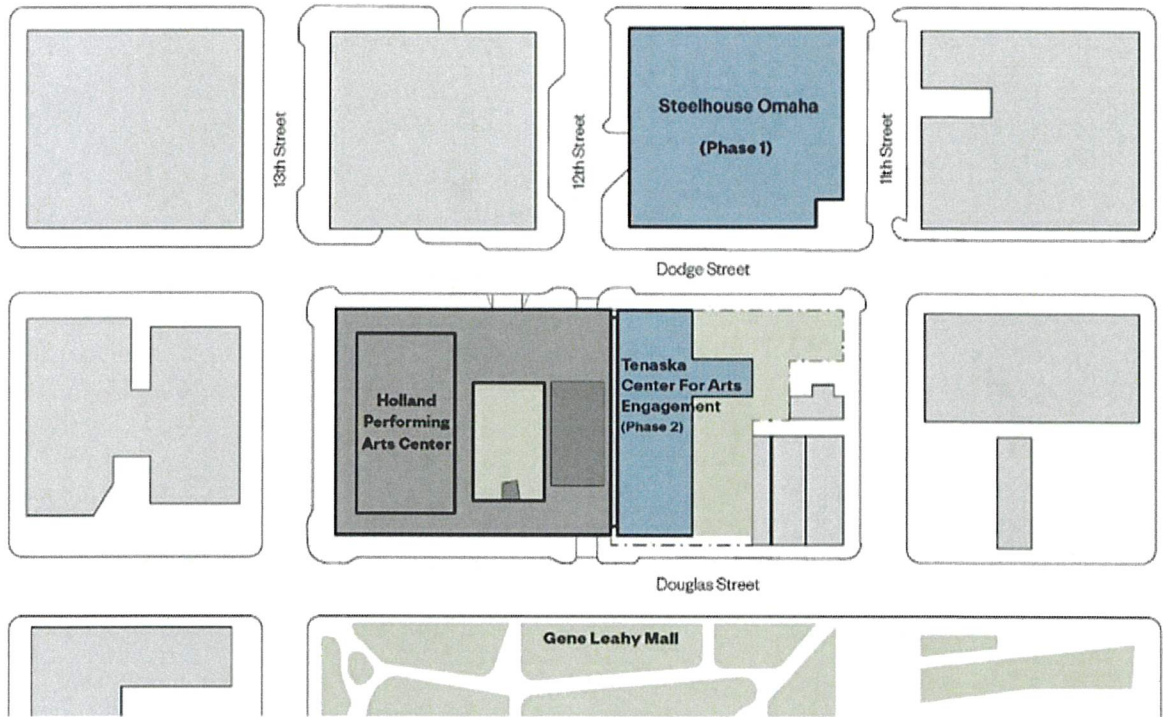
HIP HOP	
Hip Hop Lab Dance Class I	Middle - High School
Hip Hop Lab Dance Class II	Middle - High School
Hip Hop Lab Production Class	Middle - High School
Hip Hop Lab Writing & Rapping Class I	Middle - High School
Hip Hop Lab Writing & Rapping Class II	Middle - High School
Hip Hop Lab Graffiti Open Class	Middle School - Adult

HEALING ARTS	
Expressive Arts Class I	Open Level
Guitars for Vets	Adult
Healing Arts for Vets	Adult
Dance with Life Class	Adult
Expressive Arts Class II	Open Level

CAREER	
Arts Leadership Program	High School
IATSE Stagehand Training	High School - Adult
Arts Management Master Class	Adult
Theater Skills for Business Class	Adult

SUMMER CAMPS	
Hip Hop Lab Camp	Middle - High School
Advanced Dance Intensive	High School - Adult
Broadway Camp	Middle - High School
Advanced Broadway Intensive	High School - Adult
Junior Dance Camp	Elementary - Middle
Junior Broadway Camp	Elementary

PERFORMING ARTS – SITE MAP



TENASKA CENTER FOR ARTS ENGAGEMENT - RENDERINGS



View from Dodge Street, looking southwest



View from Douglas Street, looking northwest



Rehearsal Hall A



Education Lobby

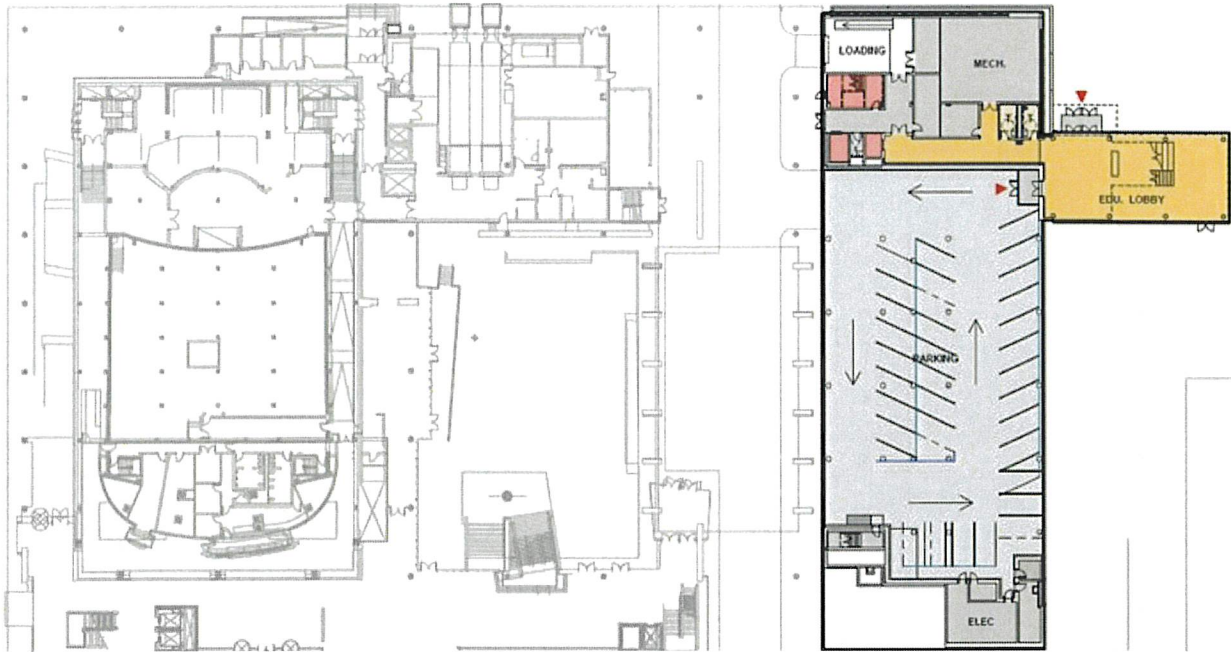


Classrooms



Outdoor Garden, looking north

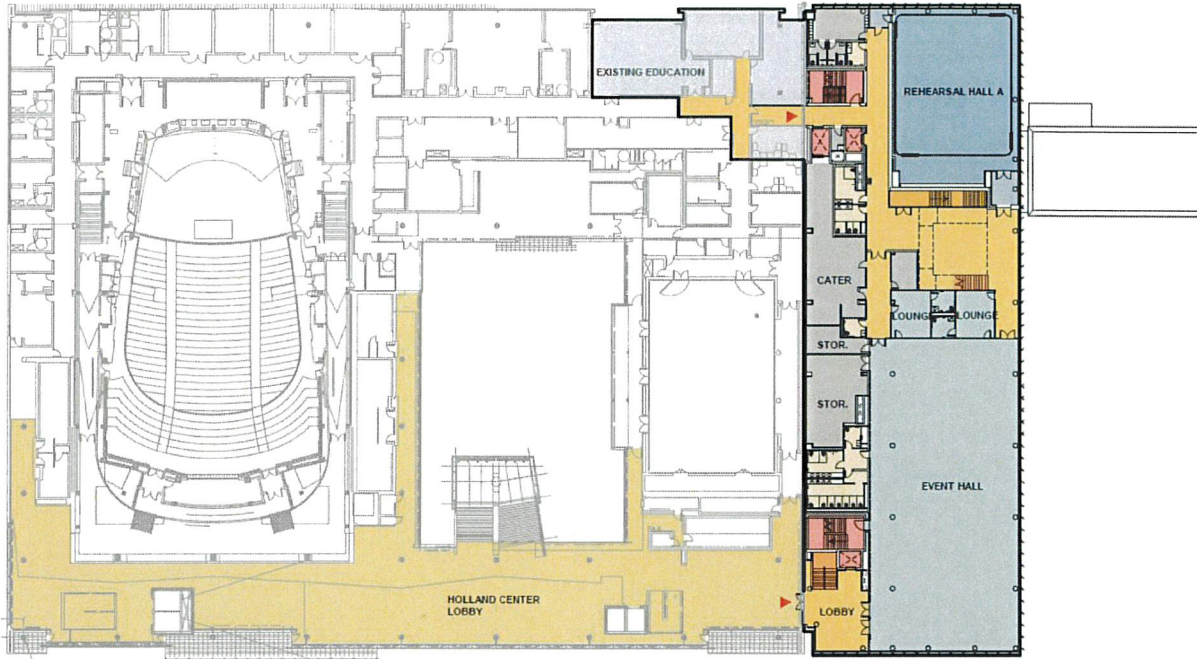
TENASKA CENTER FOR ARTS ENGAGEMENT – FLOOR PLANS



Ground Floor (Education Lobby, Outdoor Garden, Arrival Plaza)



First Floor (Event Lobby, Upper Lobby, Administrative Offices)



Second Floor (Rehearsal Hall A, Event Hall, Lobby, Lounges, Catering)



Third Floor (Classroom A, Classroom B, Classroom C, Practice Room A, Practice Room B, Rehearsal Hall B, Rehearsal Hall C, Teaching Artist Lounge, Creative Lab)

RESOLUTION NO. 2024-06666

City Clerk Office Use Only:	
Publication Date (if applicable):	_____
Agenda Date:	<u>6/4/24</u>
Department:	<u>Law</u>
Submitter:	<u>Jennifer Taylor</u>

CITY OF OMAHA
 LEGISLATIVE CHAMBER
 Omaha, Nebraska

RESOLVED BY THE CITY COUNCIL OF THE CITY OF OMAHA:

WHEREAS, Neb. Rev. Stat. §§ 13-3101 to 13-3109, the Sports Arena Facility Financing Assistance Act, provides for a political subdivision and nonprofit organization to jointly submit an application for state assistance, or turnback, on all or part of state sales tax collected in a designated program area; and,

WHEREAS, Steelhouse Omaha is a privately-owned enclosed concert venue owned by a nonprofit organization, primarily used for live performances, with an indoor capacity of at least two thousand two hundred fifty, but not more than three thousand five hundred persons, and is an eligible sports arena facility, as defined by the Sports Arena Facility Financing Assistance Act; and,

WHEREAS, the City of Omaha and Omaha Performing Arts Society (OPAS) desire to apply for state assistance or turnback, of all or part of state sales tax collected in a designated program area more specifically shown on Exhibit "A", attached hereto, including by retailers located within 600 yards of Steelhouse Omaha, state sales tax revenue collected by retailers doing business at Steelhouse Omaha, and state sales tax revenue collected on primary and secondary box office sales of admissions at Steelhouse Omaha, except for state sales tax subject to turnback for the City's arena convention center, as shown on Exhibit "A". The application will seek no more than ten (10) years of funding for promotion of the arts and cultural events, as provided by OPAS, or its affiliates, at Steelhouse Omaha, the Tenaska Center for Arts Engagement, the Holland Center, and the Orpheum; and,

WHEREAS, the City and OPAS will jointly apply for state assistance under the Sports Arena Facility Financing Assistance Act, which application shall set forth the proposed financing, detailed description of the programs contemplated, how such programs will be in furtherance of public purposes, a description of local public and private resources pledged in support of Steelhouse Omaha, and a map identifying the program area (Exhibit "A"); and,

WHEREAS, the City and OPAS requests your favorable consideration of this Resolution.

NOW, THEREFORE, BE IT RESOLVED BY THE CITY COUNCIL OF THE CITY OF OMAHA:

THAT an application by the City and the Omaha Performing Arts Society for state assistance pursuant to the Sports Arena Facility Financing Assistance Act, with a program area as shown on the map attached as Exhibit "A", for the purpose of funding promotion of the arts and cultural events, as provided by OPAS, or its affiliates, at Steelhouse Omaha, the Tenaska Center for Arts Engagement, the Holland Center and the Orpheum, is hereby approved.

APPROVED AS TO FORM:



 DEPUTY CITY ATTORNEY

5/28/2024

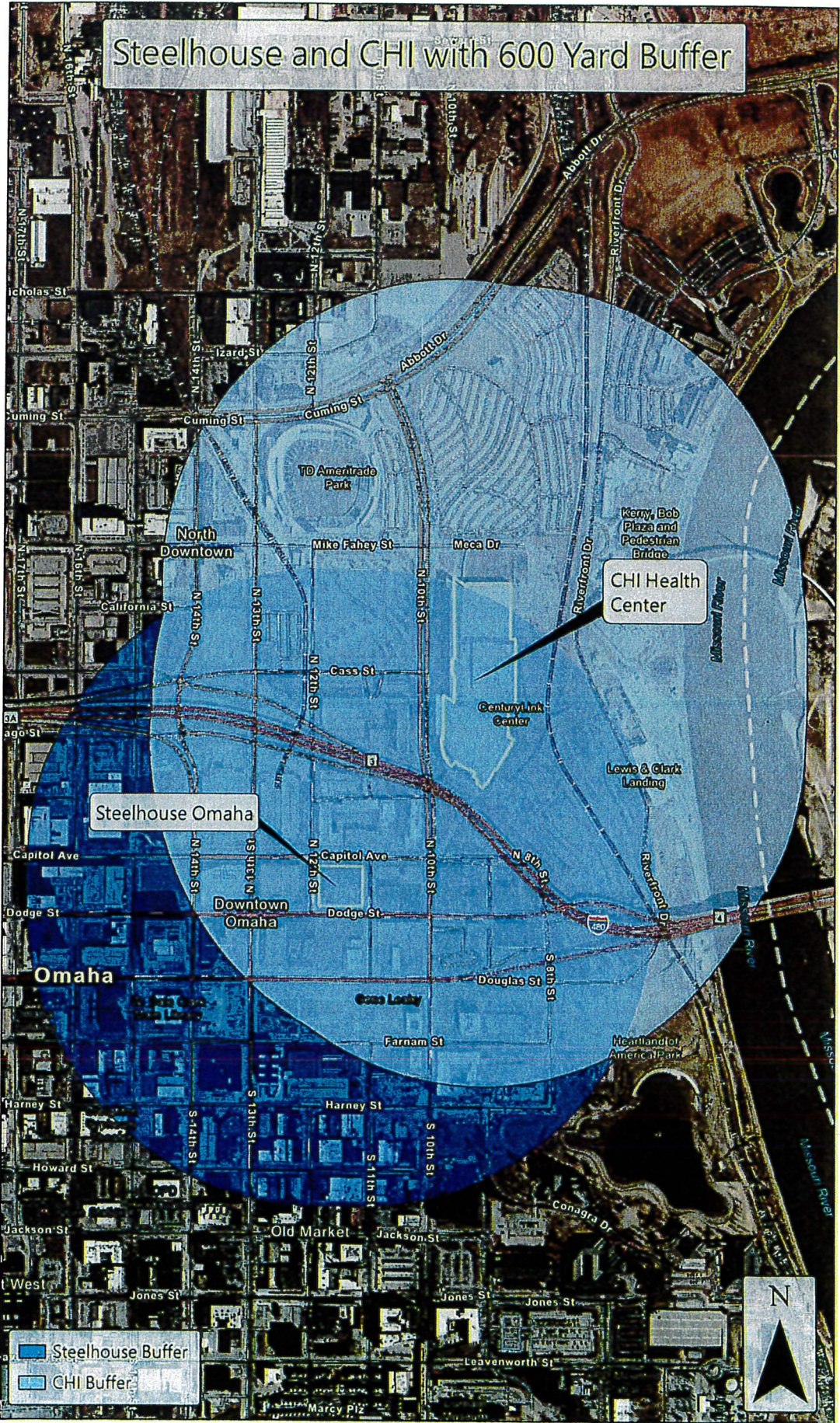
 DATE

RESOLUTION NO. 2024-06664

Adopted: JUN 04 2024 W-D

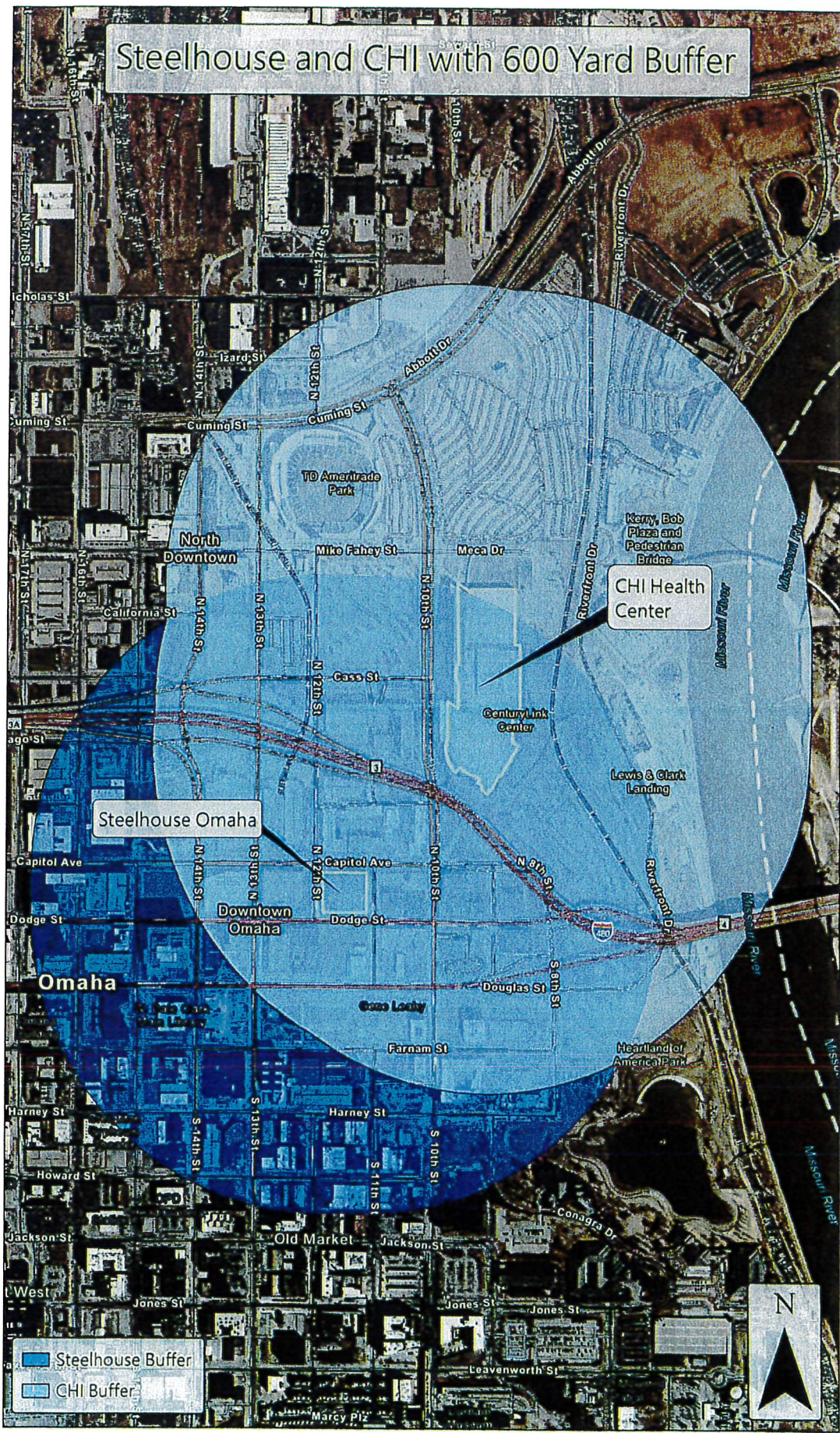
Attest: [Signature]
City Clerk

Approved: [Signature]
Mayor



TURNBACK TAX ZONE

Steelhouse and CHI with 600 Yard Buffer



TURNBACK TAX REVENUE

Burke Harr

From: Jennifer Taylor (Law) <jennifer.taylor@cityofomaha.org>
Sent: Monday, June 24, 2024 11:36 AM
To: Burke Harr; Stephen Curtiss (Fin)
Subject: Fwd: Turnback for OPAs
Attachments: Steelhouse_CHI Turnback.pdf

Burke,

Please see below for the Finance estimation of turnback tax revenue.

I have the certified copy of the resolution authorizing the City to make an application in partnership with OPAS. Have you finalized the application materials?

Jennifer J. Taylor
Deputy City Attorney
Omaha/Douglas Civic Center
1819 Farnam Street, Suite 804
Omaha, NE 68183
(402) 444-3815
(402) 444-5125 FAX
Jennifer.Taylor@CityofOmaha.org

----- Forwarded message -----

From: Tyler Leimer (Fin) <Tyler.Leimer@cityofomaha.org>
Date: Thu, Jun 20, 2024 at 11:27 AM
Subject: Re: Turnback for OPAs
To: Donna Waller (Fin) <Donna.Waller@cityofomaha.org>
Cc: Jennifer Taylor (Law) <jennifer.taylor@cityofomaha.org>, Stephen Curtiss (Fin) <Stephen.Curtiss@cityofomaha.org>, Marco Floreani (Mayr) <marco.floreani@cityofomaha.org>, Matthew Kuhse (Law) <matthew.kuhse@cityofomaha.org>

Hello,

The Steelhouse is collecting in an area very close and similar to what the CHI already collects in, and if it were to collect 100% of its turnback, it would be very similar to the amount the City currently receives for CHI. We estimated the portion of the CHI turnback that cuts into the Steelhouse to be about 60%, leaving 40% for the Steelhouse, or approximately \$2M. I have provided the infographic below for reference.

Thanks,

Tyler Leimer, Accountant II
City of Omaha Finance Department
1819 Farnam Street, #1007, 68183
402-444-4514

On Fri, Jun 14, 2024 at 12:53 PM Donna Waller (Fin) <Donna.Waller@cityofomaha.org> wrote:

Sounds good.

On Fri, Jun 14, 2024 at 12:44 PM Jennifer Taylor (Law) <jennifer.taylor@cityofomaha.org> wrote:
If Tyler has a spreadsheet, let's just run it down next week. Nothing is due today.

Jennifer J. Taylor
Deputy City Attorney
Omaha/Douglas Civic Center
1819 Farnam Street, Suite 804
Omaha, NE 68183
(402) 444-3815
(402) 444-5125 FAX
Jennifer.Taylor@CityofOmaha.org

On Fri, Jun 14, 2024 at 12:42 PM Donna Waller (Fin) <Donna.Waller@cityofomaha.org> wrote:

Steve,

I can't find a spreadsheet and Tyler's out of the office. I believe at the time I felt comfortable with the \$2M for the shaded part and Steelhouse.

We now receive around 4.5 M so I think an additional \$2M is reasonable.

On Fri, Jun 14, 2024 at 12:11 PM Stephen Curtiss (Fin) <Stephen.Curtiss@cityofomaha.org> wrote:
Tyler/Donna: do we feel good about the \$2m? Do we have a spreadsheet or something to back it up?

Stephen B. Curtiss
Finance Director, City of Omaha
402.444.5417

On Fri, Jun 14, 2024 at 10:09 AM Jennifer Taylor (Law) <jennifer.taylor@cityofomaha.org> wrote:

I think we have to submit our estimate to the state as part of the application, so we should have some basis for it.

Jennifer J. Taylor
Deputy City Attorney
Omaha/Douglas Civic Center
1819 Farnam Street, Suite 804
Omaha, NE 68183
(402) 444-3815
(402) 444-5125 FAX
Jennifer.Taylor@CityofOmaha.org

On Fri, Jun 14, 2024 at 12:02 PM Stephen Curtiss (Fin) <Stephen.Curtiss@cityofomaha.org> wrote:

\$2m is Tyler's number. Is there any harm if we guess low or high?

Stephen B. Curtiss
Finance Director, City of Omaha
402.444.5417